

Block- und Tankventillösungen für pharmazeutische Anwendungen



bürkert
FLUID CONTROL SYSTEMS

Inhalt

ALLGEMEINE BLOCKVENTIL-INFORMATIONEN	5
BÜRKERT STANDARDKONFIGURATION	13
ROBOLUX-LÖSUNG MIT 2 SITZEN	17
3C2S (3 ANSCHLÜSSE / 2 SITZE)	17
4C2S (4 ANSCHLÜSSE / 2 SITZE)	17
ROBOLUX-LÖSUNG MIT 4 SITZEN	18
4C4S (4 ANSCHLÜSSE / 4 SITZE)	18
ROBOLUX-LÖSUNG FÜR TANKBODEN	19
3C2S (3 ANSCHLÜSSE / 2 SITZE)	19
ROBOLUX-KOMBI-LÖSUNG MIT 3 SITZEN	20
3C3S (3 ANSCHLÜSSE / 3 SITZE)	20
4C3S (4 ANSCHLÜSSE / 3 SITZE)	20
ROBOLUX-KOMBI-LÖSUNG MIT 5 SITZEN	21
4C5S (4 ANSCHLÜSSE / 5 SITZE)	21
T-VENTIL / POU-LÖSUNG	22
3C1S (3 ANSCHLÜSSE / 1 SITZ)	22
BLOCKLÖSUNG MIT 1 SITZ	23
3C1S (3 ANSCHLÜSSE / 1 SITZ)	23
BLOCKLÖSUNG MIT 2 SITZEN	28
2C2S (2 ANSCHLÜSSE / 2 SITZE)	28
3C2S (3 ANSCHLÜSSE / 2 SITZE)	29
4C2S (4 ANSCHLÜSSE / 2 SITZE)	37

BLOCKLÖSUNG MIT 3 SITZEN	40
3C3S (3 ANSCHLÜSSE / 3 SITZE)	40
4C3S (4 ANSCHLÜSSE / 3 SITZE)	42
5C3S (5 ANSCHLÜSSE / 3 SITZE)	48
BLOCKLÖSUNG MIT 4 SITZEN	49
4C4S (4 ANSCHLÜSSE / 4 SITZE)	49
5C4S (5 ANSCHLÜSSE / 4 SITZE)	51
6C4S (6 ANSCHLÜSSE / 4 SITZE)	52
7C4S (7 ANSCHLÜSSE / 4 SITZE)	53
BLOCKLÖSUNG MIT 5 SITZEN	54
4C5S (4 ANSCHLÜSSE / 5 SITZE)	54
BLOCKLÖSUNG MIT 6 SITZEN	54
8C6S (8 ANSCHLÜSSE / 6 SITZE)	54
BLOCKLÖSUNG FÜR TANKS	55
BODENABLASSVENTIL	55
BODENABLASSVENTIL MIT AUFGESCHWEISSTEM MEMBRANVENTIL	56
BODENABLASSVENTIL MIT INTEGRIERTEM MEMBRANVENTIL	60
BEISPIELE KUNDENSPEZIFISCHER BLOCKLÖSUNGEN FÜR TANKS	62
SPEZIFISCHE LÖSUNGEN	65
PROBENNAHMESYSTEM	65
MIX-PROOF-VENTIL	65
WEITERE INFORMATIONEN	66



- Mehr als 3.300 zufriedene OEMs, Endkunden und Anlagenbauer im Bereich Pharma und Biotech
- Seit über 30 Jahren erfüllen wir erfolgreich alle Hygieneanforderungen



Robolux Mehrwege-Mehrfachanschluss-Membranventillösung für AstraZeneca



Blocklösungen integriert in kontinuierliche Chromatographieanlage von YMC

Allgemeine Blockventil-Informationen

Die Märkte und Anwendungen für Block- und Tankventillösungen sind sehr vielfältig.

Wichtigste Branchen:

- Pharmazeutische Produktion
- Biotechnologie
- Chemische Verarbeitung

Hauptfunktionen:

- Sammeln
- Verteilen
- Umleiten
- Probenentnahme
- Abfüllen
- Mischen und Verschneiden
- Entladen
- Umgehen oder Isolieren
- Automatisches Umschalten

Hauptanwendungen:

- Wassersysteme
- Fermentation/Bioreaktoren
- Aufreinigung
- Filtrierung
- Chromatographie
- CIP/SIP-Systeme



Blocklösung zur Herstellung von Infusionslösungen für einen der führenden Hersteller von Infusionen, klinischer Ernährung, Arzneimitteln und medizinischen Produkten mit Sitz in Hessen, Deutschland



Bodenablassventilsystem mit integriertem Füllstandssensor an einem Ansatztank für Unither Pharmaceuticals.

Bürkert Blockventillösung

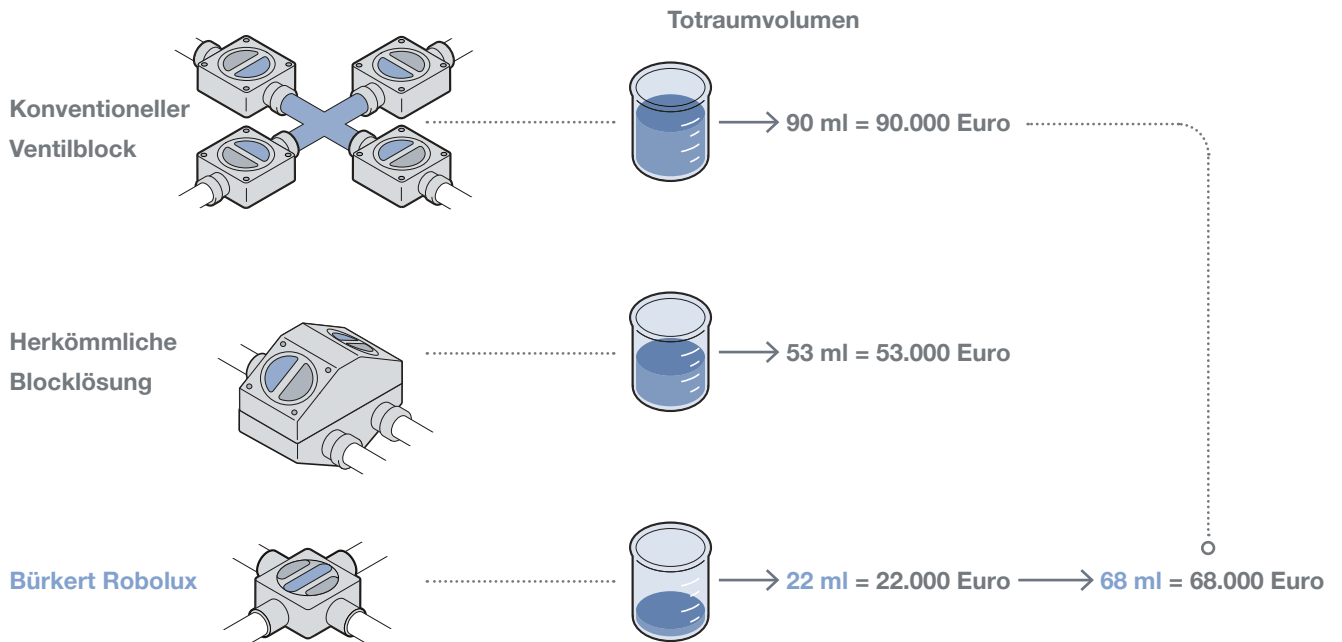
Rechenbeispiel

Höhere Produktivität dank geringerem Totraum: Aus den drei Fluidik-Konzepten ergeben sich drei verschieden große Toträume. Ihre Produktivität verbessert sich, wenn Sie Toträume und damit die Produktvermischung

reduzieren können.

Die Beispielrechnung zeigt mögliche Einsparpotenziale am Beispiel eines fiktiven Werts von 100.000 Euro pro 100 ml des Chromatographie-Endprodukts.

Drastisch reduziertes Haltevolumen



Konfigurationen mit Hauptmembranventilen wurden weitgehend durch moderne Blockventillösungen ersetzt.

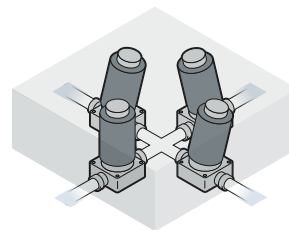
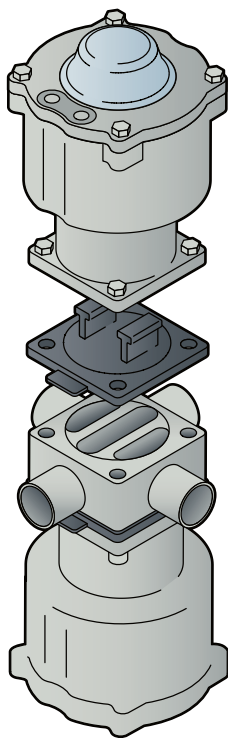
Die Hauptvorteile von Blockventillösungen sind das reduzierte Rückhaltevolumen, der Platzbedarf und die Kompaktheit. Das hygienegerechte Design ohne internes Schweißen ermöglicht komplexe Konstruktionen, die mit herkömmlichen geschweißten Konfigurationen nicht realisierbar sind.

Neues Denken, neue Technologie, neues Design.

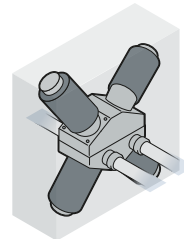
Das patentierte Doppelsteg-Membranventilsystem Robolux übertrifft in seiner Kompaktheit sogar die Lösungen mit Einsteg-Block. Diese Weiterentwicklung der Konstruktion beseitigt Toträume in einigen

Konfigurationen praktisch vollständig und reduziert das interne Haltevolumen auf sein absolutes Minimum. Durch das weiter reduzierte Gewicht lässt sich diese Konstruktion schneller aufheizen und abkühlen.

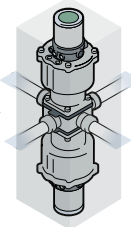
Drastisch reduzierter Platzbedarf



57,416 cm³
Ventilblock



47,430 cm³
Blocklösung



11,880 cm³
Typ 2036 Robolux

Zwei Sitze sind unter einem Antrieb angeordnet, was die Wartung beschleunigt, da nur eine Membrane für beide Sitze ausgetauscht werden muss. Eine weitere Zeitersparnis sind die vier Distanzhülsen in der Membrane für die Befestigungsschrauben, weil sie ein definiertes Drehmoment zulassen und gleichzeitig genügend Flexibilität des Dichtungsmaterials ermöglichen. Nach der erstmaligen Montage der Membrane ist kein Nachziehen erforderlich.

Neuester Stand der modernen Technik ist die Zusammenführung beider Systeme. Das patentierte Robolux-Doppelsteg-Membranventilsystem in Kombination mit der traditionellen Einsteg-Konstruktion schafft ein weltweit einzigartiges Technologieniveau.

Diese neue Technologie erfüllt nicht nur die strengen Anforderungen einer äußerst anspruchsvollen Branche, sondern verschiebt sogar die Grenzen des Machbaren.



Bürkert Blockventilkompetenz

20 Jahre Erfahrung in der Fertigung individueller Blockdesigns und standardisierter Blockkonfigurationen.

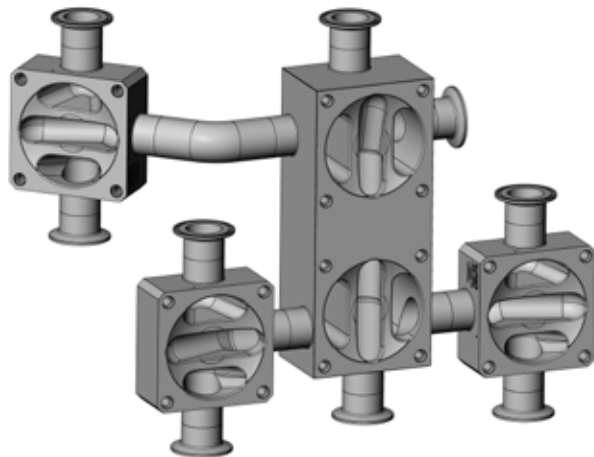
Für weitergehende Informationen siehe

www.buerkert.de/de/mehr-ueber/Membranventile

Individuelles Blockdesign

Siehe Seite 61 und folgende

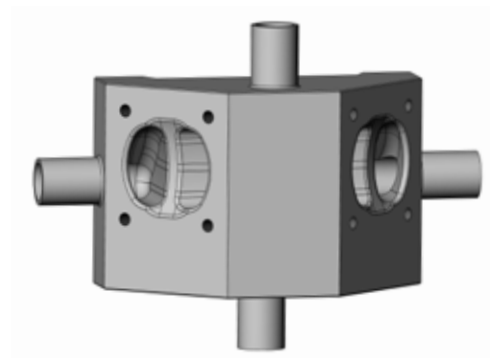
- flexibles und kompaktes Design für individuelle Einbaulage
- optimale Entleerung
- minimaler Totraum
- minimales Haltevolumen
- weniger Schweißnähte
- komplette Blockschweißlösungen



Standardisierte Blockkonfigurationen

Siehe Seite 17 und folgende

- standardisierte Funktionen und P&IDs
- minimales Haltevolumen
- ausgelegt für alle verfügbaren Antriebsarten
- weniger Schweißnähte
- minimaler Totraum



Basisinformationen

Sitzgröße

DN08 - DN100
Robulux RV50 – RV110



Antriebe



Handantrieb



Robolux-Antrieb



Inox-Antrieb



ELEMENT-Antrieb



Elektrisch linearer
Antrieb



Pneumatischer
CLASSIC-Antrieb

Membranen

EPDM-Code AD
EPDM/PTFE zweiteiliger Code EA
EPDM/PTFE zweiteiliger Code EU
EPDM/PTFE-Gylon® laminiert Code ER



Polieroberfläche

Mechanisches Polieren, elektrisches Polieren
Internes Polieren, externes Polieren



Rohrleitungsanschlüsse

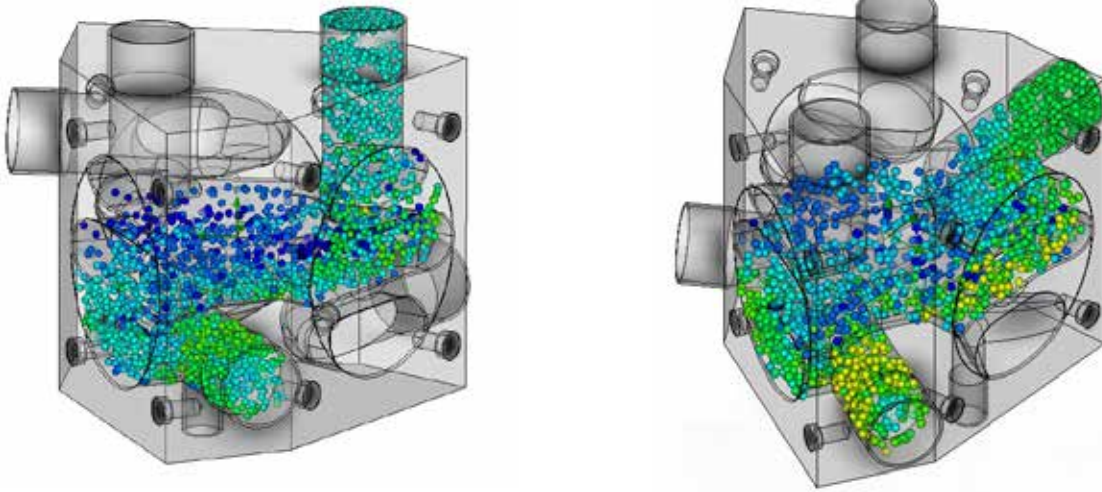
Schweißanschluss

DN [mm]	NPS	DIN EN ISO 1127 ISO 4200 DIN 11866, Reihe B	SMS 3008 ISO 2037	DIN 11850 Reihe 0	DIN 11850 Reihe 1 DIN EN 10357 Reihe B	DIN 11850 Reihe 2 DIN EN 10357 Reihe A DIN 11866 Reihe A	DIN 11850 Reihe 3	BS 4825	ASME BPE DIN 11866 Reihe C	JIS G 3447	JIS G 3459	ASME B36.19M SCHEDULE 10S
4,0	-	-	-	SC40 6,0x1,0	-	-	-	-	-	-	-	-
6,0	1/8"	SA78 10,2x1,6	-	SC41 8,0x1,0	-	-	-	-	SA89 3,17x0,56	-	-	-
8,0	1/4"	SA40 13,5x1,6	-	SC42 10,0x1,0	-	-	-	SODB 6,35x1,2	SA90 6,35x0,89	SA70 13,8x1,65	-	-
10,0	3/8"	SA41 17,2x1,6	-	-	SF40 12,0x1,0	SD40 13,0x1,5	SE40 14,x2,0	SODC 9,53x1,2	SA91 9,53x0,89	SA71 17,3x1,65	-	-
15,0	1/2"	SA42 21,3x1,6	-	SC43 18,0x1,5	SF41 18,0x1,0	SD42 19,0x1,5	SE42 20,0x2,0	SODD 12,7x1,2	SA92 12,7x1,65	SA72 21,7x2,11	-	SA30 21,3x2,11
20,0	3/4"	SA43 26,9x1,6	-	SC44 22,0x1,5	SF42 22,0x1,0	SD43 23,0x1,5	SE43 24,0x2,0	SODE 19,05x1,2	SA93 19,05x1,65	-	SA80 27,2x2,1	SA31 26,7x2,11
25,0	1"	SA44 33,7x2,0	SA60 25,0x1,2	SC45 28,0x1,5	SF43 28,0x1,0	SD44 29,0x1,5	SE44 30,0x2,0	SODF 25,4x1,65	SODF 25,4x1,65	SA73 25,4x1,2	SA81 34x2,0	SA32 33,4x2,77
32,0	1 1/4"	SA45 42,4x2,0	SA61 33,7x1,2	SC46 34,0x1,5	SF44 34,0x1,0	SD45 35,0x1,5	SE45 36,0x2,0	-	-	-	SA82 42,7x2,0	SA33 42,2x2,77
40,0	1 1/2"	SA46 48,3x2,0	SA62 38,0x1,2	SC47 40,0x1,5	SF45 40,0x1,0	SD46 41,0x1,5	SE46 42,0x2,0	SODH 38,1x1,65	SODH 38,1x1,65	SA74 38,1x1,2	SA83 48,6x2,0	SA34 48,3x2,77
50,0	2"	SA47 60,3x2,0	SA63 51,0x1,2	SC48 52,0x1,5	SF46 52,0x1,0	SD47 53,0x1,5	SE47 54,0x2,0	SODI 50,8x1,65	SODI 50,8x1,65	SA75 50,8x1,5	SA84 60,5x2,0	SA35 60,3x2,77
65,0	2 1/2"	SA48 76,1x2,0	SA64 63,5x1,6	-	-	SD48 70,0x2,0	-	SODJ 63,5x1,65	SODJ 63,5x1,65	SA77 63,5x2,0	-	SA36 73,0x3,05
80,0	3"	SA49 88,9x2,3	SA65 76,1x1,6	-	-	SD49 85,0x2,0	-	SODK 76,2x1,65	SODK 76,2x1,65	SA79 76,3x2,0	-	SA37 88,9x3,05
100,0	4"	SA39 114,3x2,3	SA66 101,6x2,0	-	-	SD50 104,0x2,0	-	SODL 101,6x2,11	SODL 101,6x2,11	-	-	SA38 114,3x3,05

* weitere Rohranschlussarten auf Anfrage

Clamp-Anschluss

DN [mm]	NPS	DIN 32676 Reihe A DIN-Rohr DIN 11850 Reihe 2	DIN 32676 Reihe B ISO-4200 Rohr	ASME BPE	BS 4825 Clamp BS 4825-3, Rohr BS 4825-1	ISO 2852	Clamp ASME BPE Rohr JIS G 3447
6,0	1/8"	TD39 - 8,0x1,0 Clamp: 25,0	-	-	-	-	-
8,0	1/4"	TD40 - 10,0x1,0 Clamp: 25,0	TC40 - 13,5x1,6 Clamp: 25,0	TG50 - 6,35x0,89 Clamp: 25,0	TH40 - 6,35x1,2 Clamp: 25,0	-	-
10,0	3/8"	TD41 - 13,0x1,5 Clamp: 34,0	TC53 - 17,2x1,6 Clamp: 25,0	TG01 - 9,53x0,89 Clamp: 25,0	TH41 - 9,53x1,2 Clamp: 25,0	-	-
15,0	1/2"	TD42 - 19,0x1,5 Clamp: 34,0	TC52 - 21,3x1,6 Clamp: 50,5	TG02 - 12,7x1,65 Clamp: 25,0	TH42 - 12,7x1,2 Clamp: 25,0	-	-
20,0	3/4"	TD43 - 23,0x1,5 Clamp: 34,0	TC43 - 26,9x1,6 Clamp: 50,5	TG03 - 19,05x1,65 Clamp: 25,0	TH43 - 19,05x1,2 Clamp: 25,0	-	-
25,0	1"	TD44 - 29,0x1,5 Clamp: 50,5	TC44 - 33,7x2,0 Clamp: 50,5	TG04 - 25,4x1,65 Clamp: 50,5	TG04 - 25,4x1,65 Clamp: 50,5	TM44 - 25,6x1,5 Clamp: 50,5	TG73 - 25,4x1,2 Clamp: 50,5
32,0	1 1/4"	TD45 - 35,0x1,5 Clamp: 50,5	-	-	-	-	TG74 - 31,8x1,2 Clamp: 50,5
40,0	1 1/2"	TD46 - 41,0x1,5 Clamp: 50,5	TC46 - 48,3x2,0 Clamp: 64,0	TG05 - 38,1x1,65 Clamp: 50,5	TG05 - 38,1x1,65 Clamp: 50,5	TM46 - 38,6x1,5 Clamp: 50,5	TG75 - 38,1x1,2 Clamp: 50,5
50,0	2"	TD47 - 53,0x1,5 Clamp: 64,0	TC47 - 60,3x2,0 Clamp: 77,5	TG06 - 50,8x1,65 Clamp: 64,0	TG06 - 50,8x1,65 Clamp: 64,0	TM47 - 51,6x1,5 Clamp: 64,0	TG76 - 50,8x1,5 Clamp: 64,0
65,0	2 1/2"	TD48 - 70,0x2,0 Clamp: 91,0	TC48 - 76,1x2,0 Clamp: 91,0	TG07 - 63,5x1,65 Clamp: 77,5	TG07 - 63,5x1,65 Clamp: 77,5	TM48 - 64,1x1,9 Clamp: 77,5	TG77 - 63,5x2,0 Clamp: 77,5
80,0	3"	TD49 - 85,0x2,0 Clamp: 106,0	TC49 - 88,9x2,3 Clamp: 106,0	TG08 - 76,1x1,65 Clamp: 91,0	TG08 - 76,1x1,65 Clamp: 91,0	TM49 - 76,7x1,9 Clamp: 91,0	TG78 - 76,3x2,0 Clamp: 91,0
100,0	4"	TD50 - 104,0x2,0 Clamp: 119,0	TC50 - 114,3x2,3 Clamp: 130,0	TG09 - 101,6x2,11 Clamp: 119,0	TG09 - 101,6x2,11 Clamp: 119,0	TM50 - 102,5x2,45 Clamp: 119,0	-



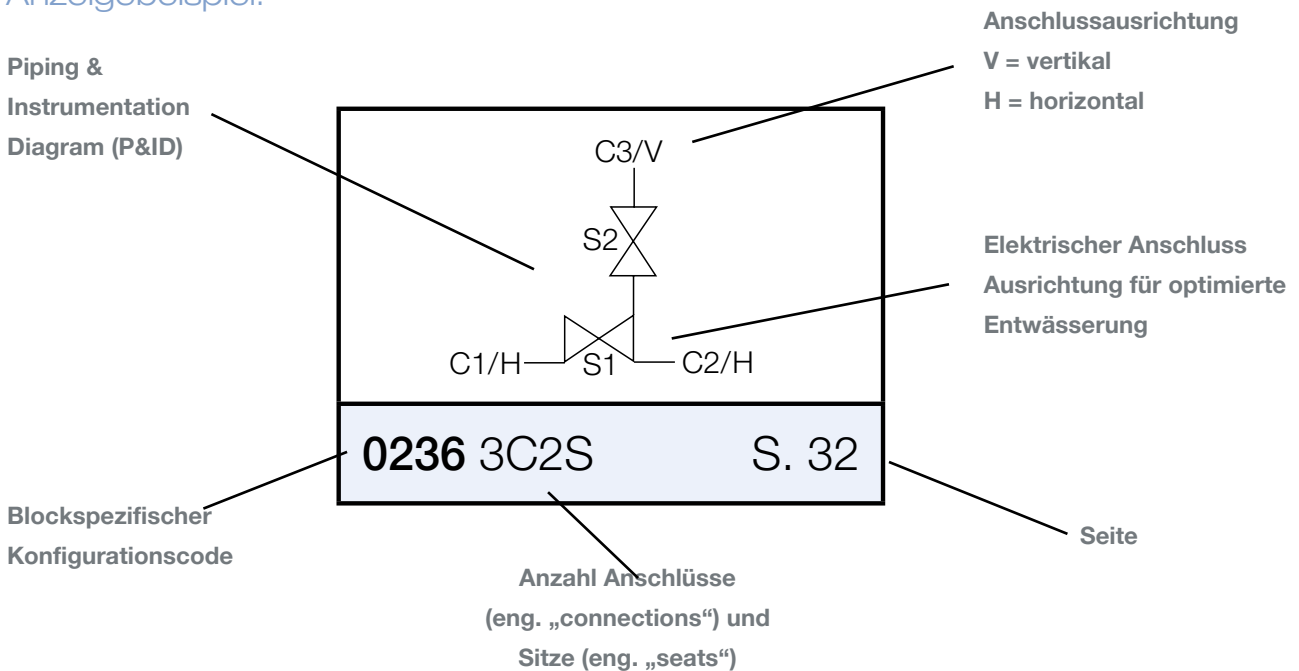
Kompletter Innendurchfluss: Vollständig durchspülte Toträume vermeiden Verunreinigungen



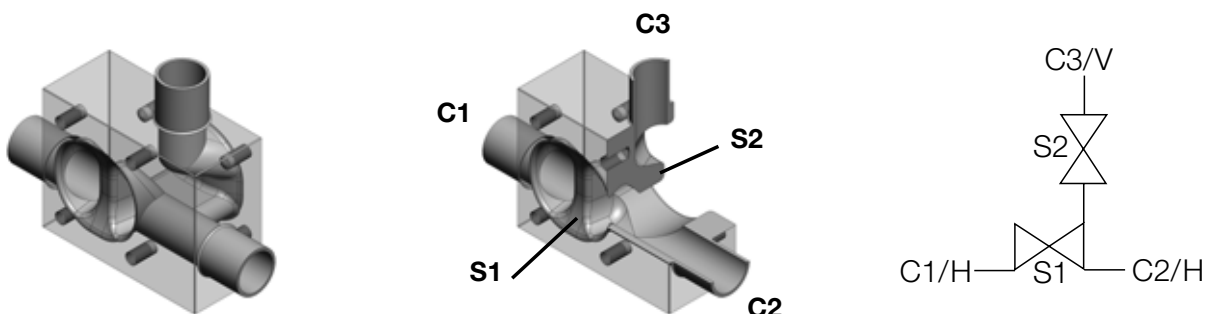
Gewählte Standardkonfigurationen

Bürkert Standard-Blockventil- und Tankventillösungen sind durch spezifische Designcodes definiert (z. B. SAP1, 0236, GMP3 ...)
Für das Produktanfrageformular siehe Datenblatt Typ 2034:
www.buerkert.de/de/type/2034

Anzeigebeispiel:



0236



3 Anschlüsse, 2 Sitze: 1 vertikaler Anschluss, 2 horizontale Anschlüsse

Die gezeigten Gehäuse sind nur beispielhafte Darstellungen. Bei totraumoptimierter Bauweise kann das Design vom gezeigten Beispiel abweichen.

Robolux	T-Ventil / POU	1 Sitz	2 Sitze	2 Sitze
32R 3C2S S. 17	T-Ventil 3C1S S. 22	GMPA 3C1S S. 24	0216 2C2S S. 28	0236 3C2S S. 32
42R 4C2S S. 17	NB58 3C1S S. 22	GMPB 3C1S S. 24	0201 3C2S S. 29	0237 3C2S S. 32
CF 4C4S S. 18	NH15 3C1S S. 22	SAPA 3C1S S. 24	0202 3C2S S. 29	0256 3C2S S. 32
DFP 4C4S S. 18	POU 3C1S S. 23	SAPB 3C1S S. 25	0208 3C2S S. 29	0257 3C2S S. 33
32T *MW56 3C2S S. 19	POU 4C4S S. 23	SAPC 3C1S S. 25	0209 3C2S S. 30	GMP3 3C2S S. 33
32T *MW90 3C2S S. 19		SAPD 3C1S S. 25	0226 3C2S S. 30	GMP4 3C2S S. 33
K301 3C3S S. 20		0113 3C1S S. 26	0227 3C2S S. 30	GMP5 3C2S S. 34
K302 4C3S S. 20		0114 3C1S S. 26	0232 3C2S S. 31	GMP6 3C2S S. 34
K501 4C5S S. 21		0115 3C1S S. 26	0233 3C2S S. 31	SAP1 3C2S S. 34
		0116 3C1S S. 27	0234 3C2S S. 31	SAP2 3C2S S. 35

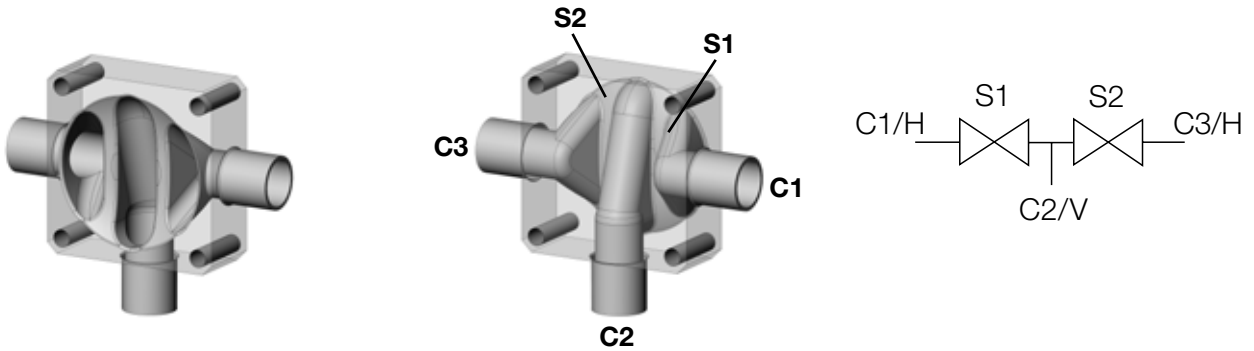
2 Sitze	2 Sitze	3 Sitze	3 Sitze	4 Sitze
SAP3 3C2S S. 35	0253 4C2S S. 39	0302 4C3S S. 42	0336 4C3S S. 45	0413 4C4S S. 49
SAP4 3C2S S. 35	0254 4C2S S. 39	0303 4C3S S. 42	0337 4C3S S. 46	0415 4C4S S. 49
SAP7 3C2S S. 36	3 Sitze	0304 4C3S S. 43	0338 4C3S S. 46	0418 4C4S S. 49
SAP8 3C2S S. 36	0316 3C3S S. 40	0317 4C3S S. 43	0340 4C3S S. 46	0423 4C4S S. 50
0203 4C2S S. 37	0325 3C3S S. 40	0319 4C3S S. 43	0341 4C3S S. 47	0410 4C4S S. 50
0204 4C2S S. 37	0328 3C3S S. 40	0321 4C3S S. 44	0343 4C3S S. 47	0409 4C4S S. 50
0205 4C2S S. 37	0333 3C3S S. 41	0322 4C3S S. 44	0344 4C3S S. 47	0403 5C4S S. 51
0235 4C2S S. 38	0334 3C3S S. 41	0326 4C3S S. 44	0323 5C3S S. 48	0416 5C4S S. 51
0249 4C2S S. 38	0339 3C3S S. 41	0329 4C3S S. 45	0327 5C3S S. 48	0492 5C4S S. 51
0250 4C2S S. 38	0301 4C3S S. 42	0335 4C3S S. 45	0342 5C3S S. 48	0417 6C4S S. 52

4 Sitze	6 Sitze	Tankventil	Tankboden mit aufgeschweißtem Gehäuse	Tankventil mit integriertem Sitz
0424 6C4S S. 52	0602 8C6S S. 54	Tankventil S. 55	0231 3C2S S. 56	0252 3C2S S. 60
0425 6C4S S. 52		Tankventil NBxx links S. 55	0243 3C2S S. 56	0229 3C2S S. 60
0476 6C4S S. 53		Tankventil NBxx rechts S. 55	0247 3C2S S. 56	0251 3C2S S. 60
0477 7C4S S. 53			0244 3C2S S. 57	0206 3C2S sS. 61
			0248 3C2S S. 57	
5 Sitze				
			0245 3C2S S. 57	
0501 4C5S S. 54				
			0241 3C2S S. 58	
			0242 3C2S S. 58	
			0239 3C2S S. 58	
			0240 3C2S S. 59	

Robolux-Lösung mit zwei Sitzen

3C2S (3 Anschlüsse / 2 Sitze)

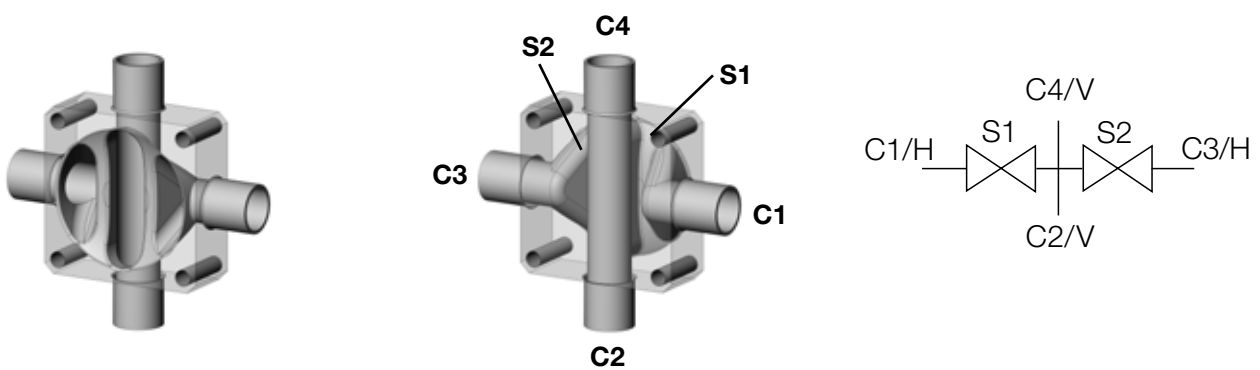
32R



3 Anschlüsse, 2 Sitze: 1 vertikal, 2 horizontal

4C2S (4 Anschlüsse / 2 Sitze)

42R

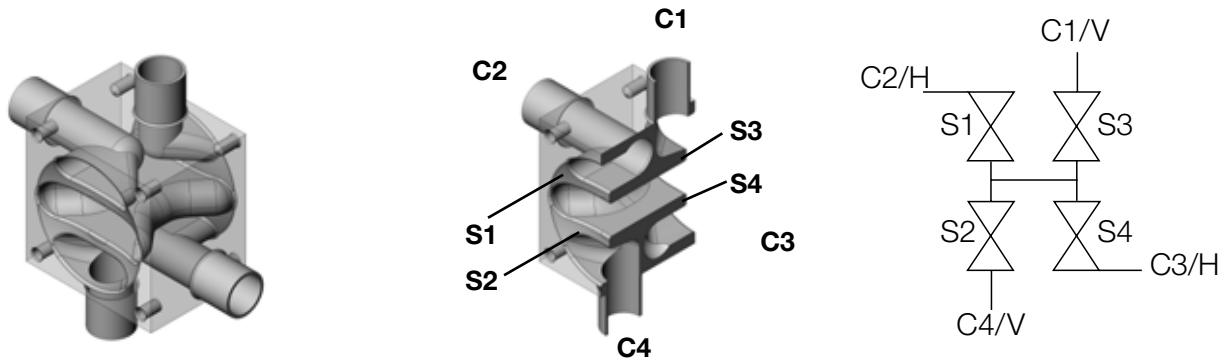


4 Anschlüsse, 2 Sitze: 2 vertikal, 2 horizontal

Robolux-Lösung mit 4 Sitzen

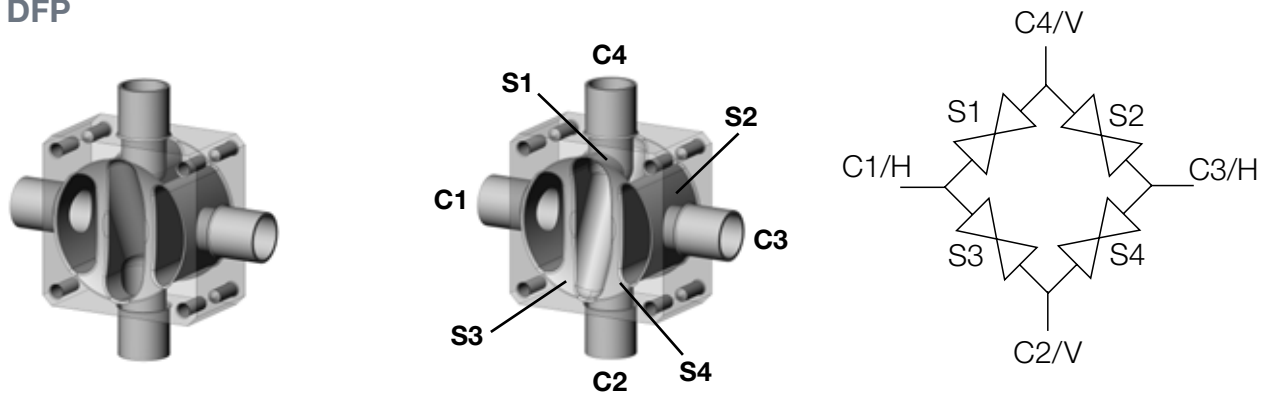
4C4S (4 Anschlüsse / 4 Sitze)

CF



4 Anschlüsse, 4 Sitze: 2 vertikal, 2 horizontal

DFP

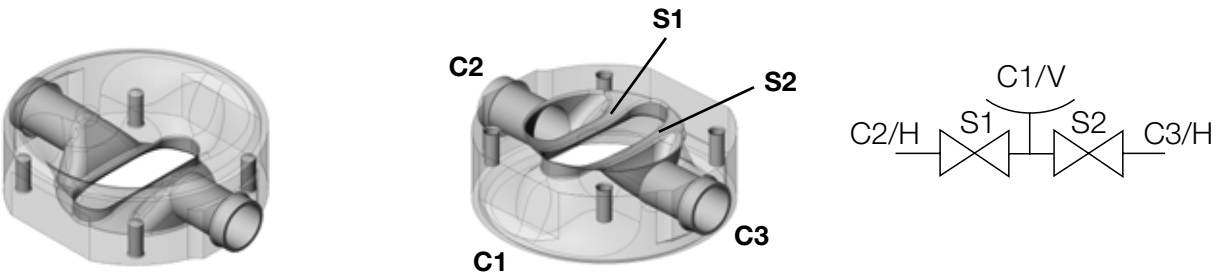


4 Anschlüsse, 4 Sitze: 2 vertikal, 2 horizontal

Robolux-Lösung für Tankboden

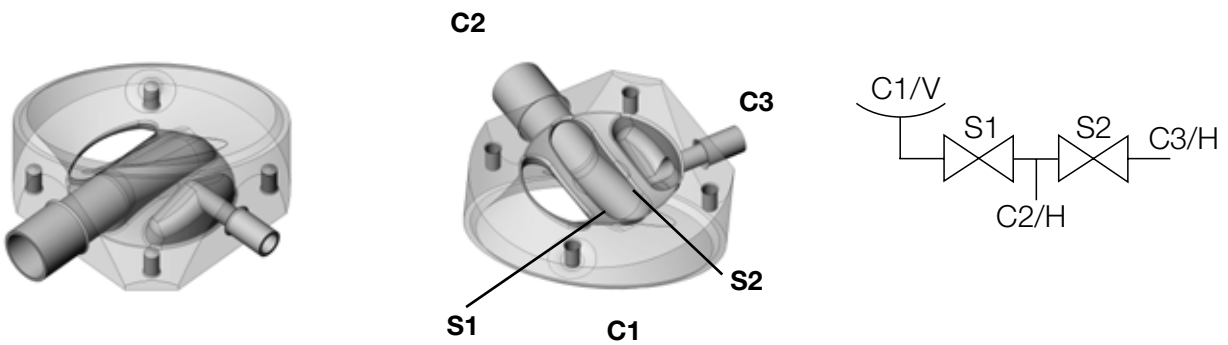
3C2S (3 Anschlüsse / 2 Sitze)

32T *MW56



3 Anschlüsse, 2 Sitze: 1 vertikal, 2 horizontal

32T *MW90

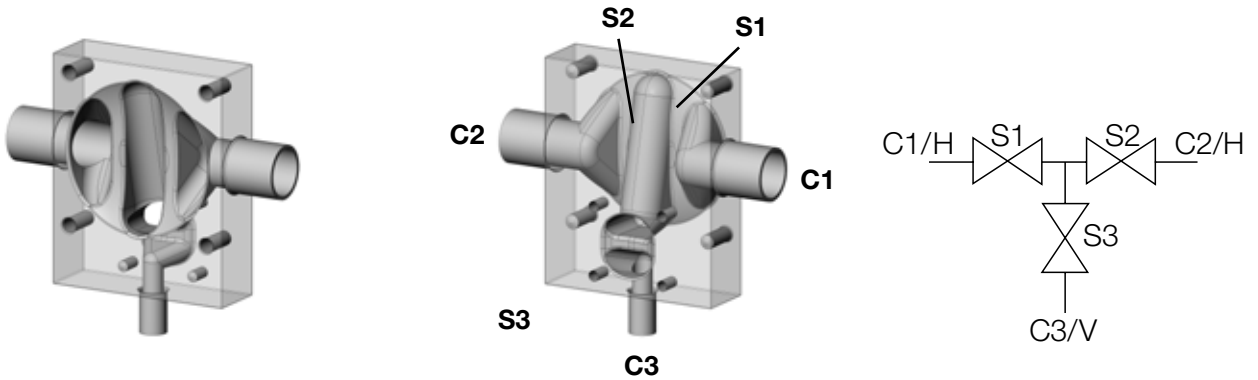


3 Anschlüsse, 2 Sitze: 1 vertikal, 2 horizontal

Robolux-Kombi-Lösung mit 3 Sitzen

3C3S (3 Anschlüsse / 3 Sitze)

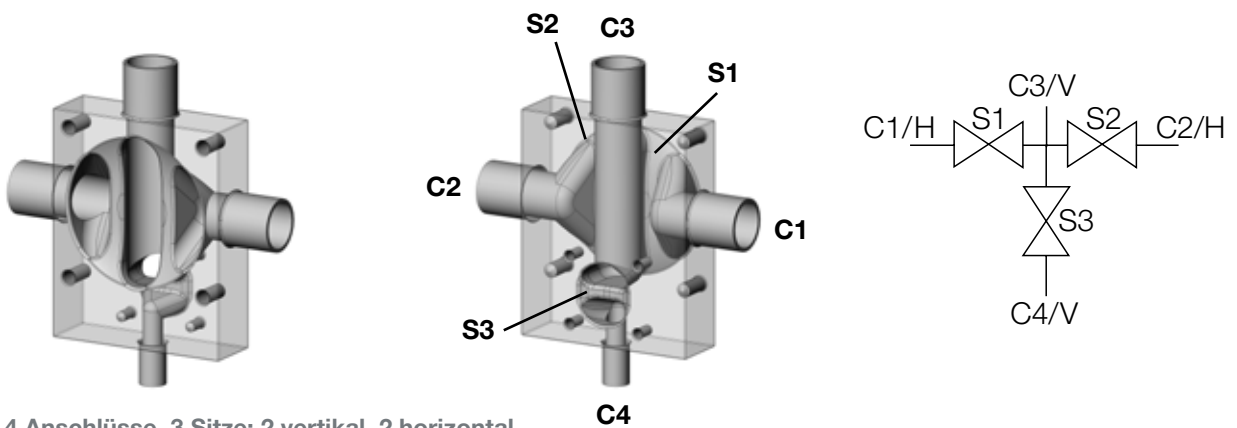
K301



3 Anschlüsse, 3 Sitze: 1 vertikal, 2 horizontal

4C3S (4 Anschlüsse / 3 Sitze)

K302

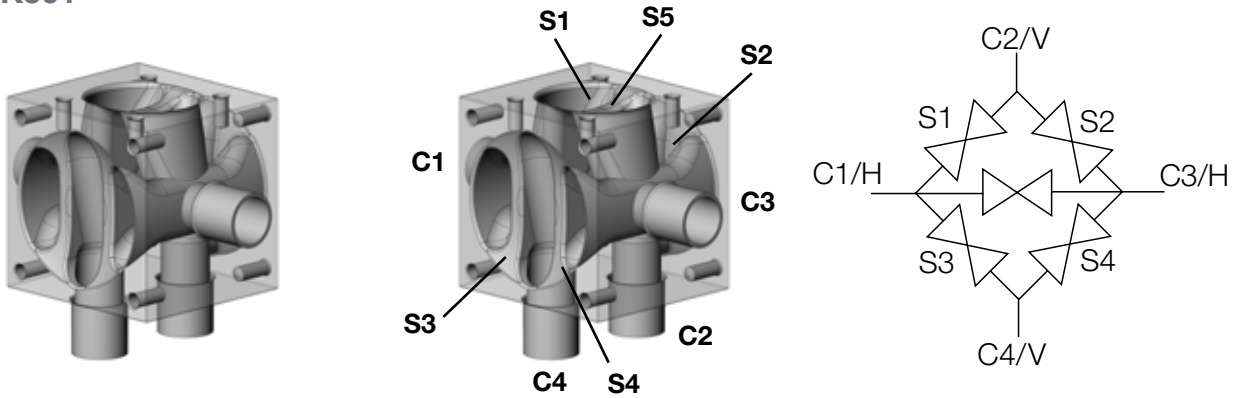


4 Anschlüsse, 3 Sitze: 2 vertikal, 2 horizontal

Robolux-Kombi-Lösung mit 5 Sitzen

4C5S (4 Anschlüsse / 5 Sitze)

K501

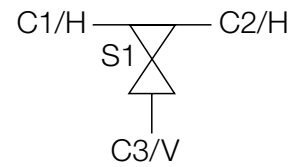
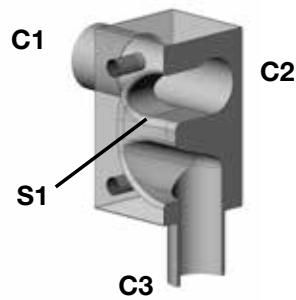
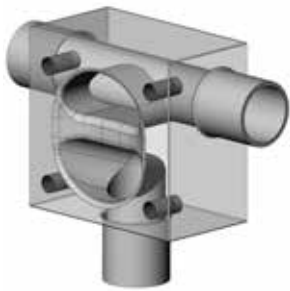


4 Anschlüsse, 5 Sitze: 2 vertikal, 2 horizontal

T-Ventil / POU-Lösung

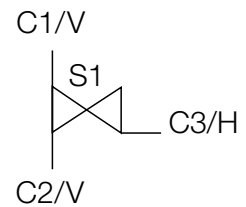
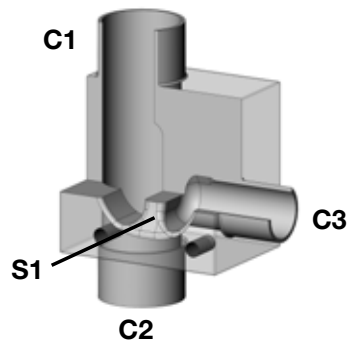
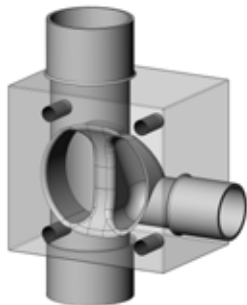
3C1S (3 Anschlüsse / 1 Sitz)

T-Ventil Standard



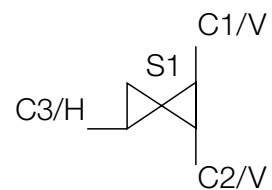
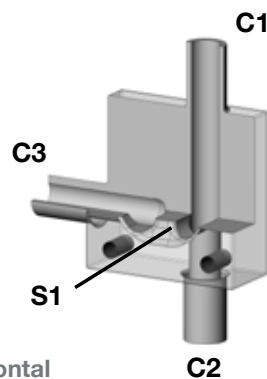
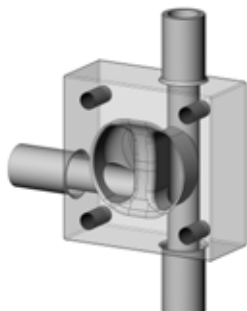
3 Anschlüsse / 1 Sitz: 1 vertikal, 2 horizontal

NB58



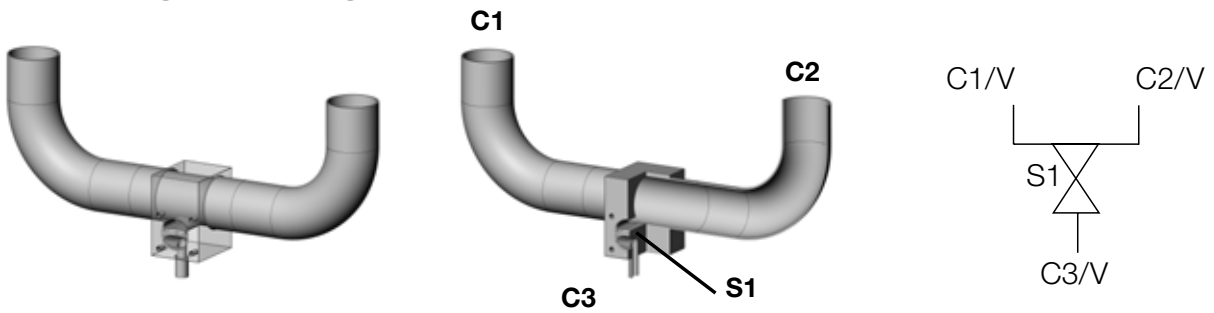
3 Anschlüsse / 1 Sitz: 2 vertikal, 1 horizontal

NH15



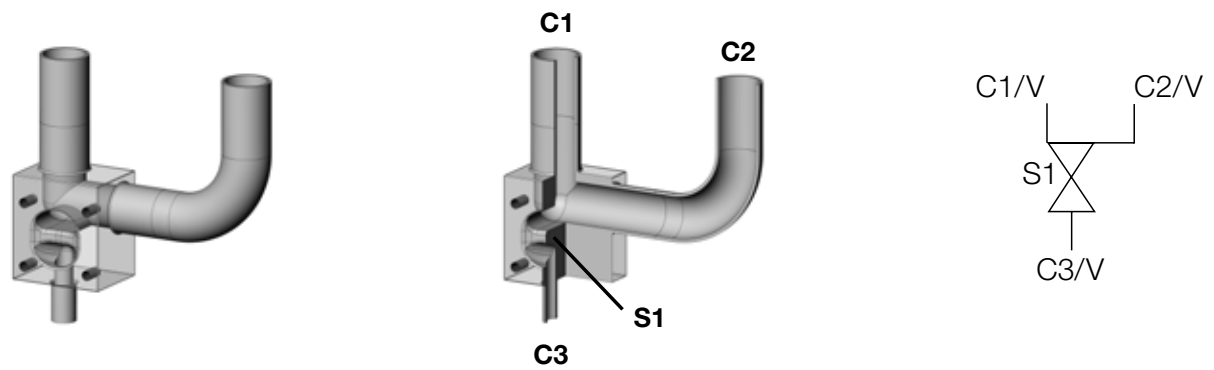
3 Anschlüsse / 1 Sitz: 2 vertikal, 1 horizontal

POU-Design mit U-Bogen



3 Anschlüsse / 1 Sitz: 3 vertikal

POU-optimiertes Design mit U-Bogen

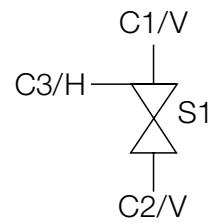
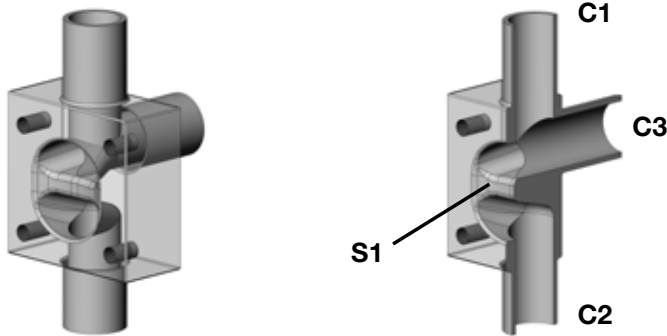


3 Anschlüsse / 1 Sitz: 3 vertikal

Blocklösung mit 1 Sitz

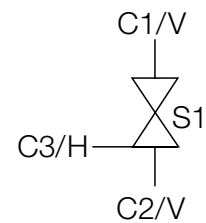
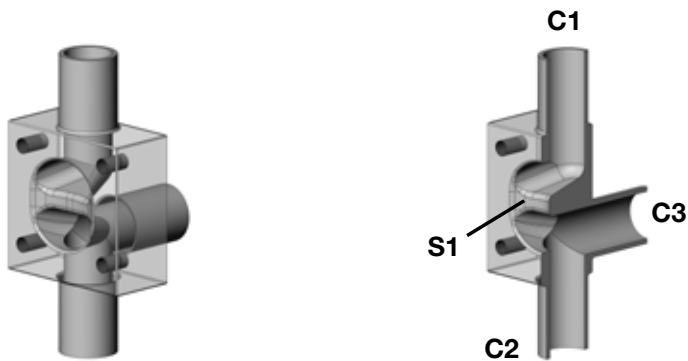
3C1S (3 Anschlüsse / 1 Sitz)

GMPA



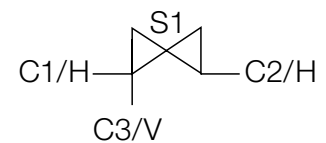
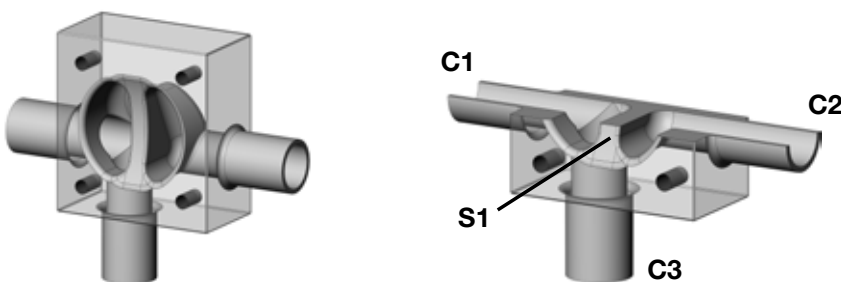
3 Anschlüsse / 1 Sitz: 2 vertikal, 1 horizontal

GMPB



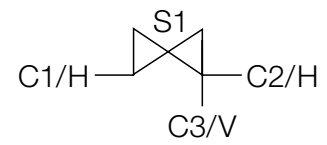
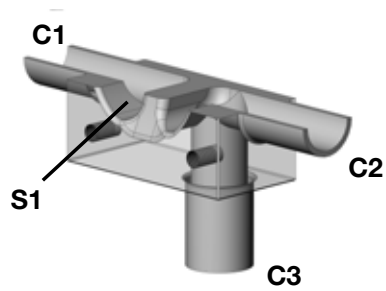
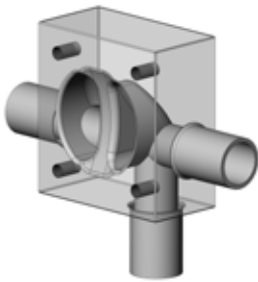
3 Anschlüsse / 1 Sitz: 2 vertikal, 1 horizontal

SAPA



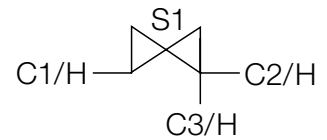
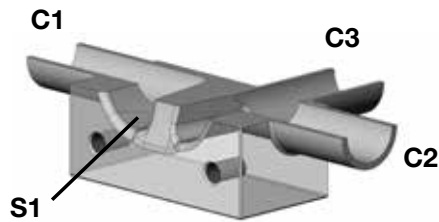
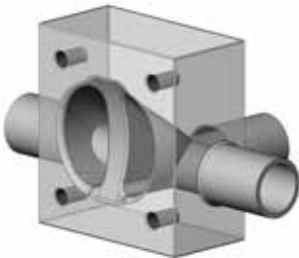
3 Anschlüsse / 1 Sitz: 2 horizontal, 1 vertikal

SAPB



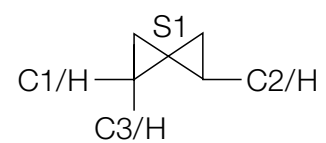
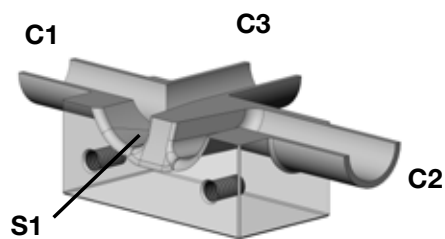
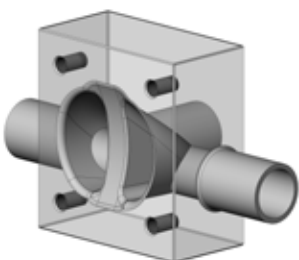
3 Anschlüsse / 1 Sitz: 2 horizontal, 1 vertikal

SAPC



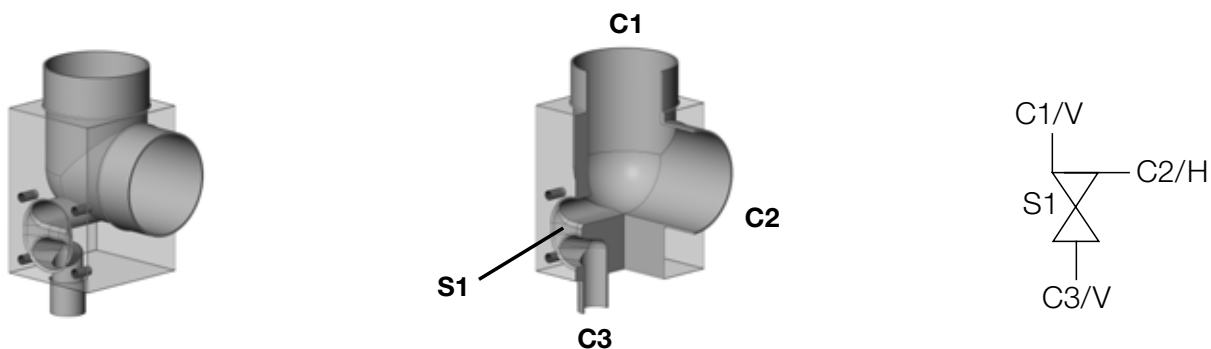
3 Anschlüsse / 1 Sitz: 3 horizontal

SAPD



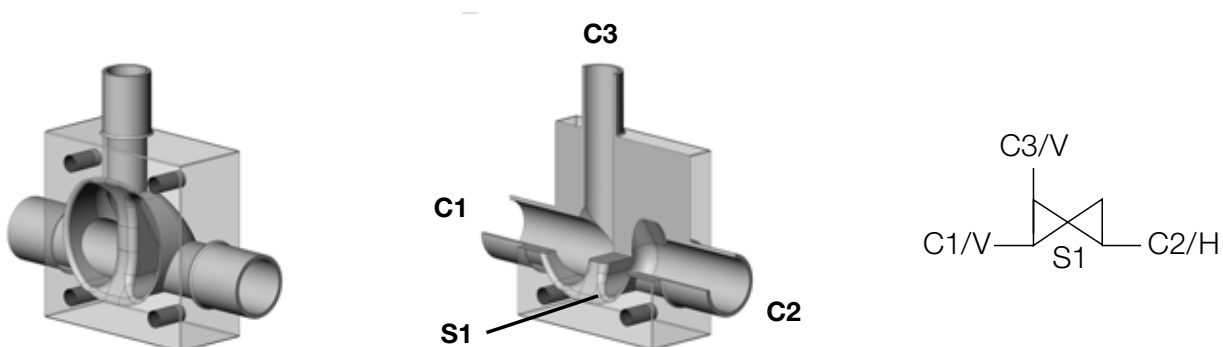
3 Anschlüsse / 1 Sitz: 3 horizontal

0113



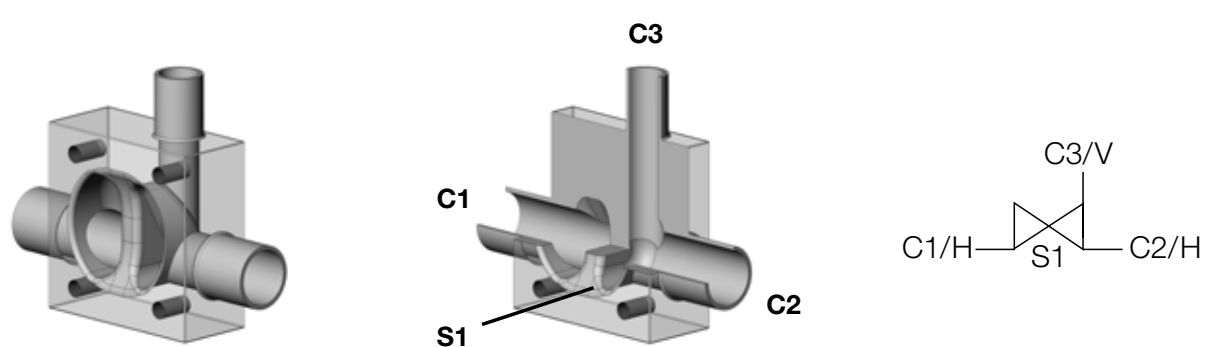
3 Anschlüsse / 1 Sitz: 1 horizontal, 2 vertikal

0114



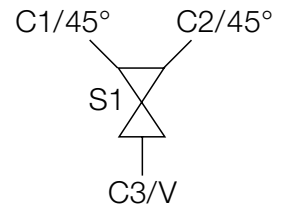
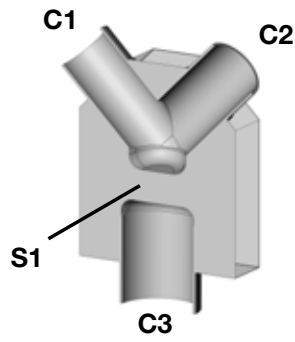
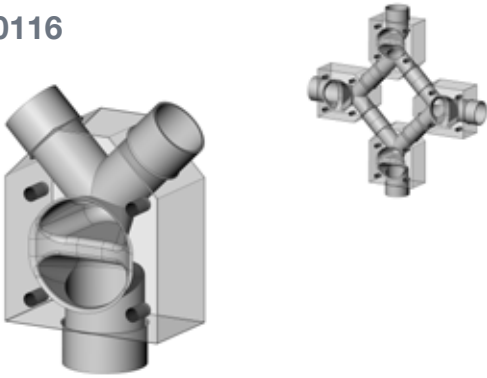
3 Anschlüsse / 1 Sitz: 2 horizontal, 1 vertikal

0115



3 Anschlüsse / 1 Sitz: 2 horizontal, 1 vertikal

0116

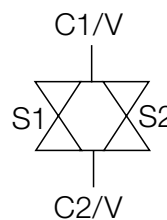
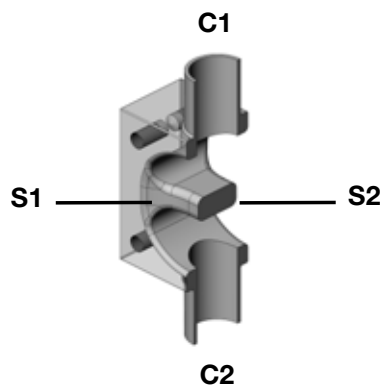
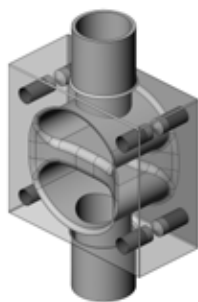


3 Anschlüsse / 1 Sitz: 2 vertikal 45°, 1 vertikal

Blocklösung mit 2 Sitzen

2C2S (2 Anschlüsse / 2 Sitze)

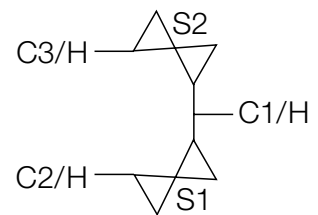
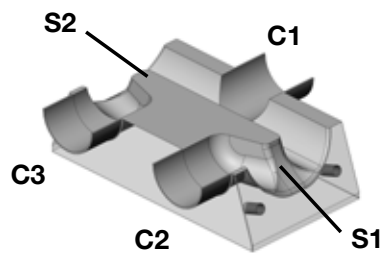
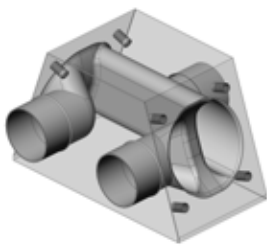
0216



2 Anschlüsse, 2 Sitze: 2 vertikal

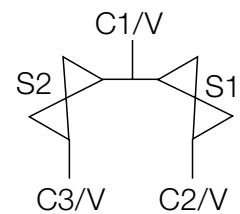
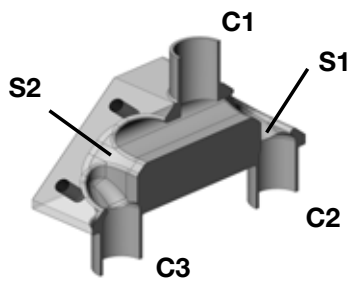
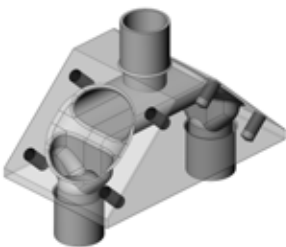
3C2S (3 Anschlüsse / 2 Sitze)

0201



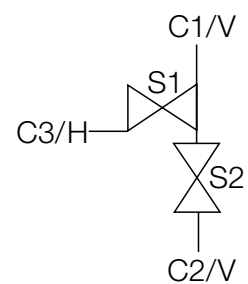
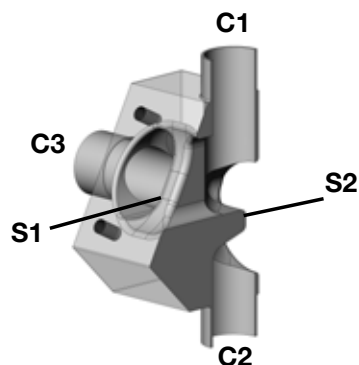
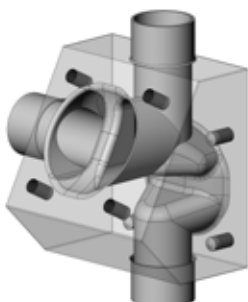
3 Anschlüsse, 2 Sitze: 3 horizontal

0202



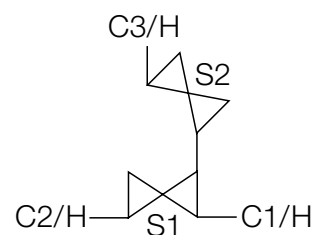
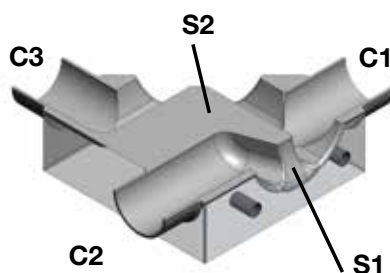
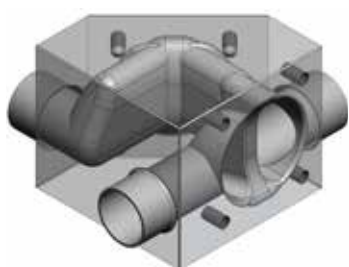
3 Anschlüsse, 2 Sitze: 3 vertikal

0208



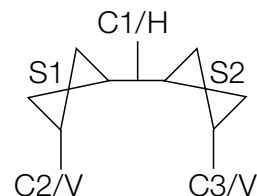
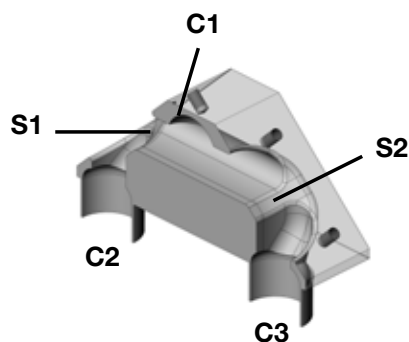
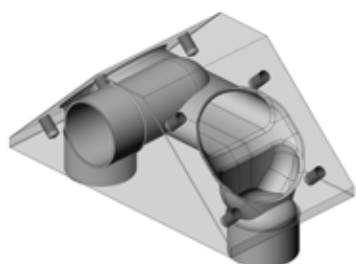
3 Anschlüsse, 2 Sitze: 2 vertikal, 1 horizontal

0209



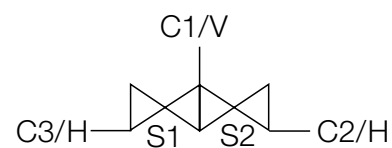
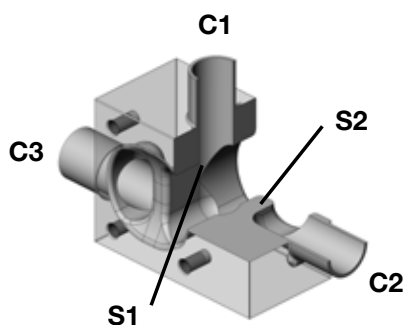
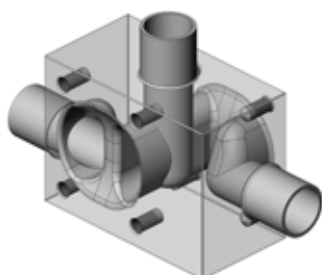
3 Anschlüsse, 2 Sitze: 3 horizontal

0226



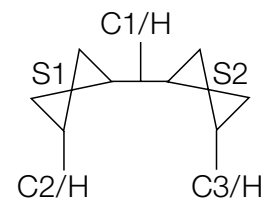
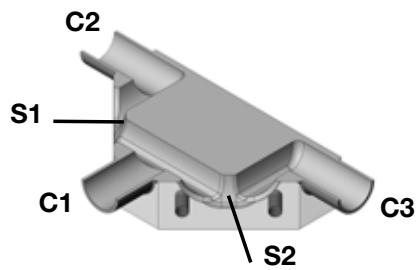
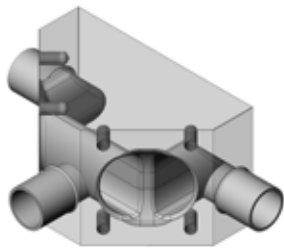
3 Anschlüsse, 2 Sitze: 2 vertikal, 1 horizontal

0227



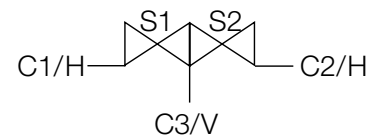
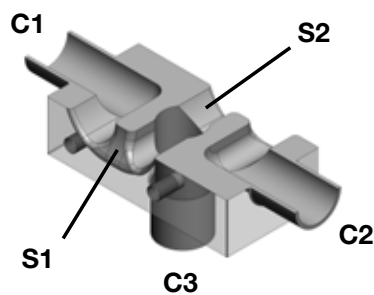
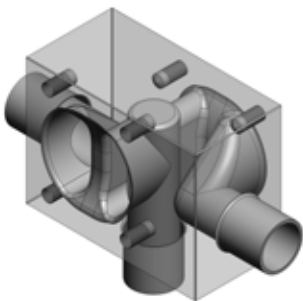
3 Anschlüsse, 2 Sitze: 1 vertikal, 2 horizontal

0232



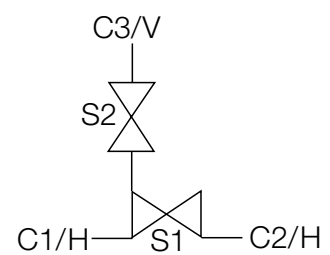
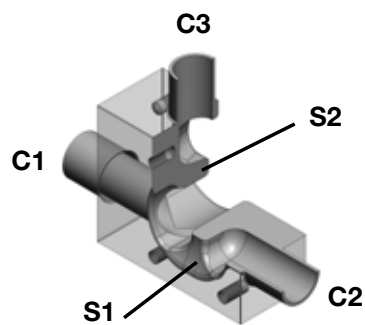
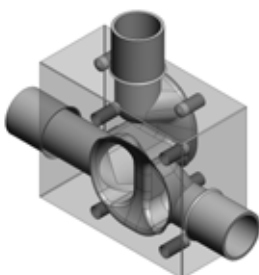
3 Anschlüsse, 2 Sitze: 3 horizontal

0233



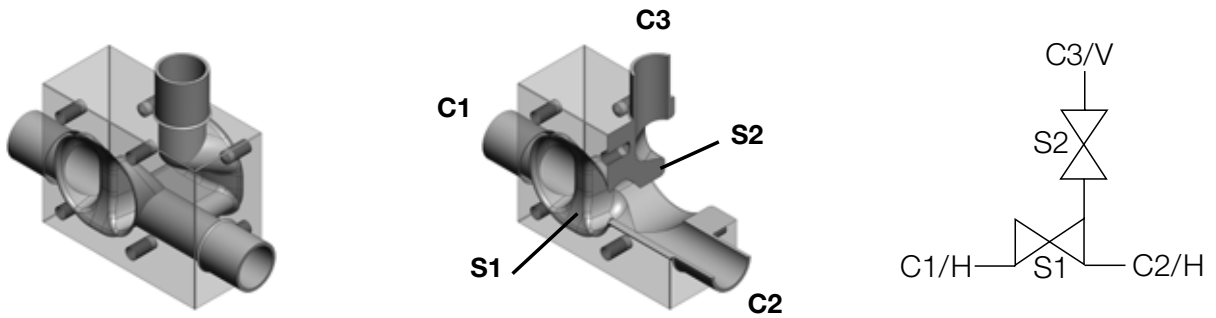
3 Anschlüsse, 2 Sitze: 1 vertikal, 2 horizontal

0234



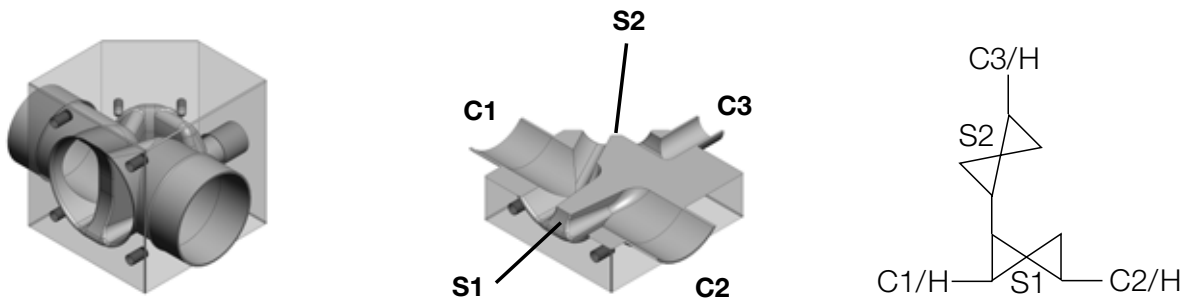
3 Anschlüsse, 2 Sitze: 1 vertikal, 2 horizontal

0236



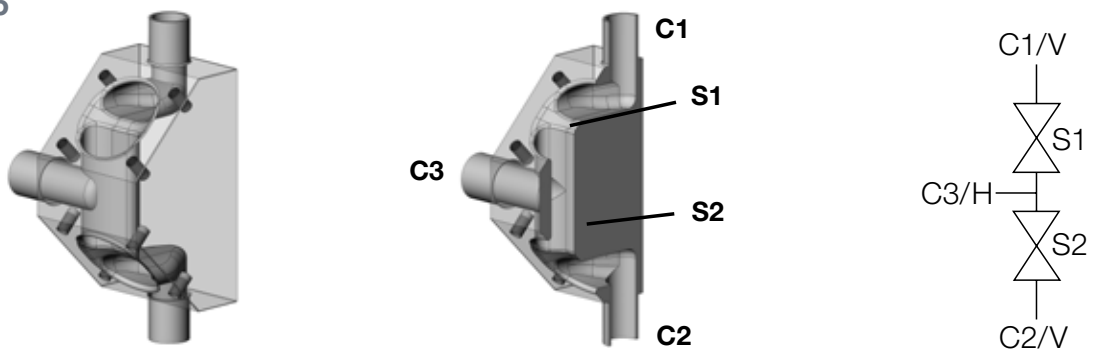
3 Anschlüsse, 2 Sitze: 1 vertikal, 2 horizontal

0237



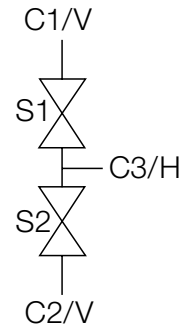
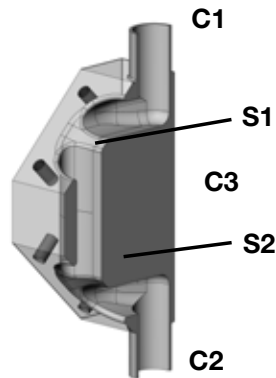
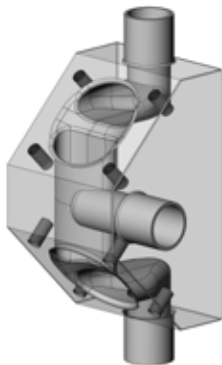
3 Anschlüsse, 2 Sitze: 3 horizontal

0256



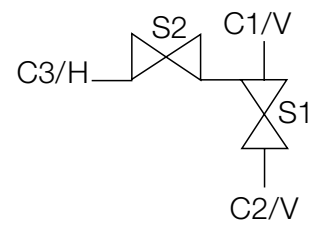
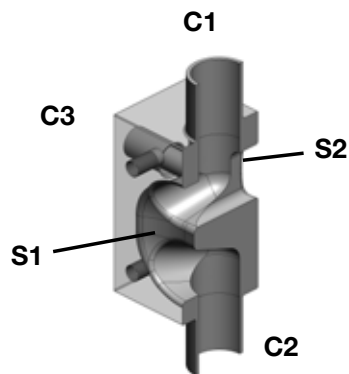
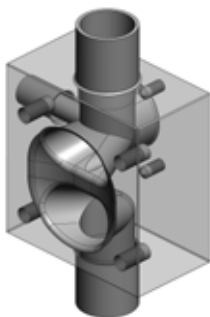
3 Anschlüsse, 2 Sitze: 2 vertikal, 1 horizontal

0257



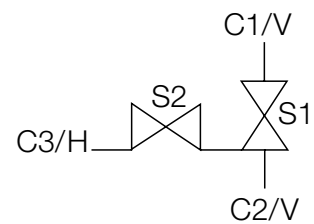
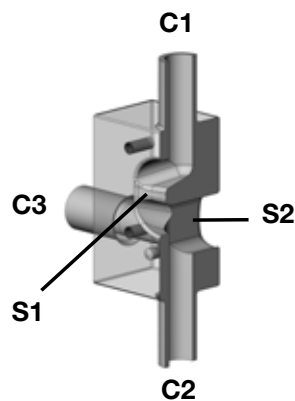
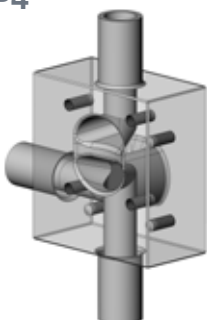
3 Anschlüsse, 2 Sitze: 2 vertikal, 1 horizontal

GMP3



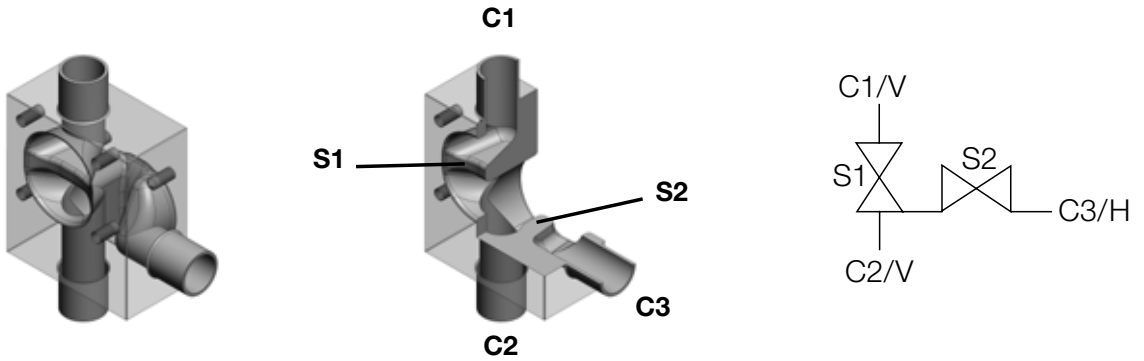
3 Anschlüsse, 2 Sitze: 2 vertikal, 1 horizontal

GMP4



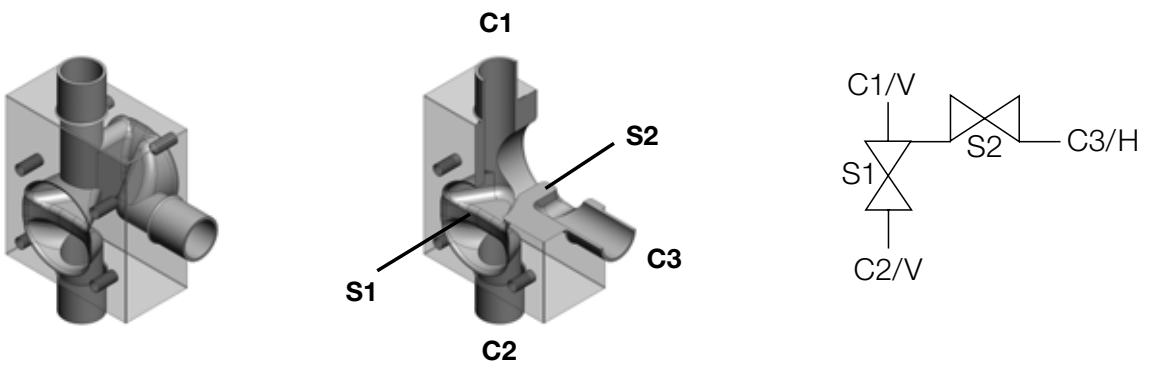
3 Anschlüsse, 2 Sitze: 2 vertikal, 1 horizontal

GMP5



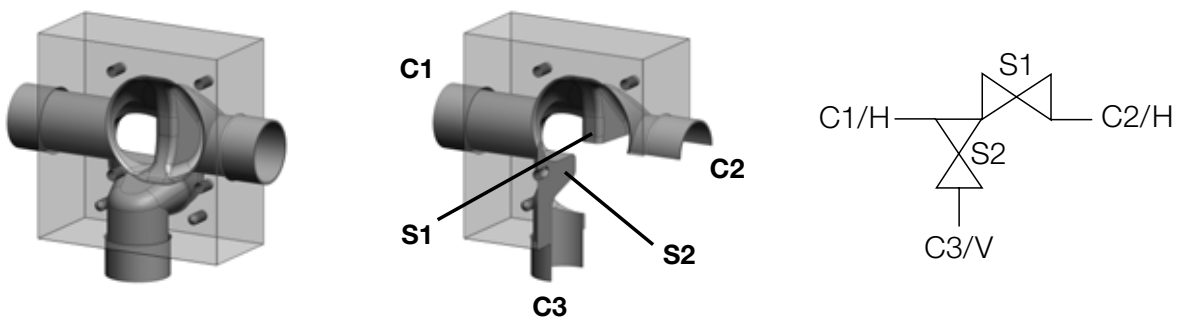
3 Anschlüsse, 2 Sitze: 2 vertikal, 1 horizontal

GMP6



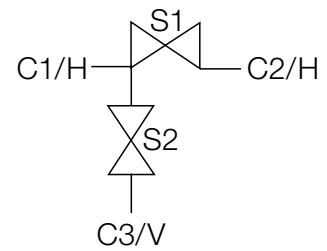
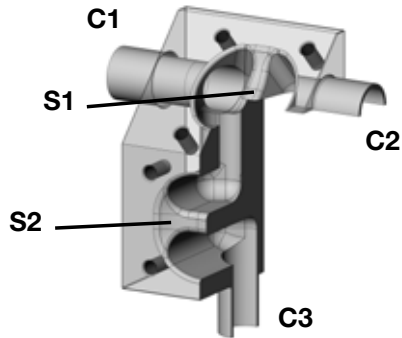
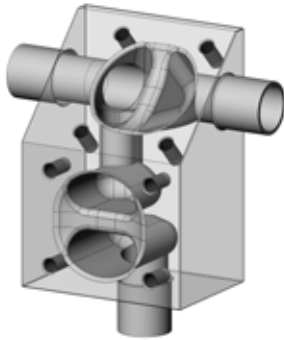
3 Anschlüsse, 2 Sitze: 2 vertikal, 1 horizontal

SAP1



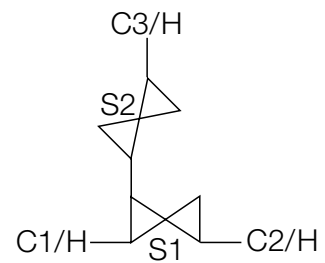
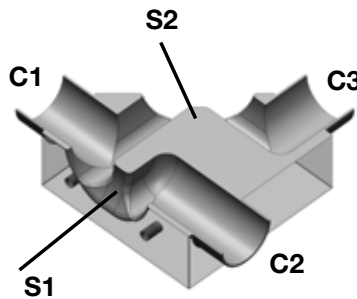
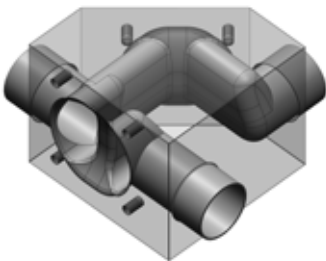
3 Anschlüsse, 2 Sitze: 1 vertikal, 2 horizontal

SAP2



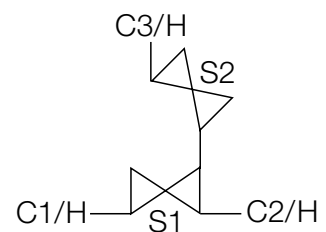
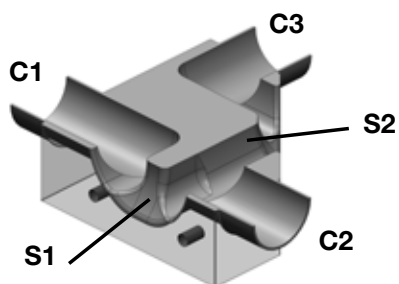
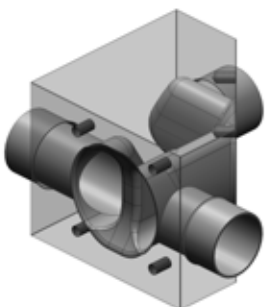
3 Anschlüsse, 2 Sitze: 1 vertikal, 2 horizontal

SAP3



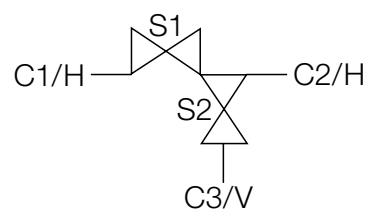
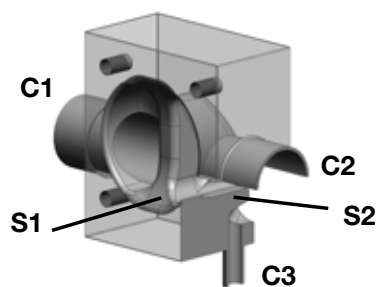
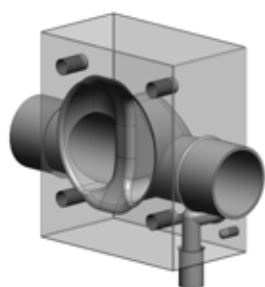
3 Anschlüsse, 2 Sitze: 3 horizontal

SAP4



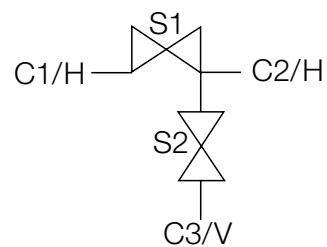
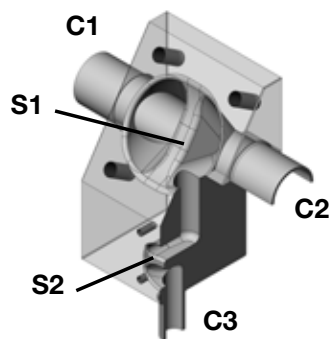
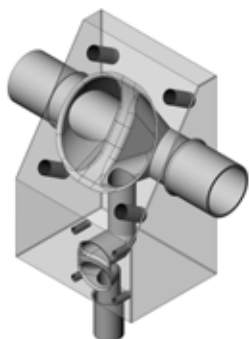
3 Anschlüsse, 2 Sitze: 3 horizontal

SAP7



3 Anschlüsse, 2 Sitze: 1 vertikal, 2 horizontal

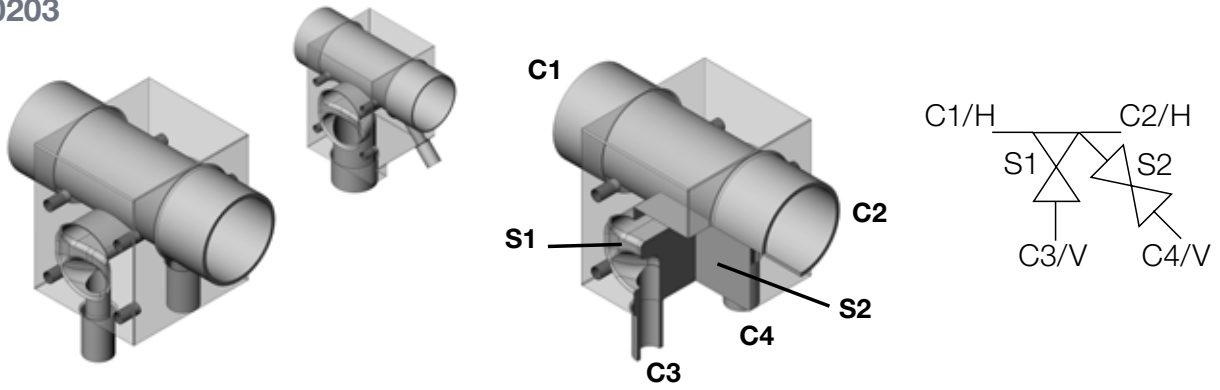
SAP8



3 Anschlüsse, 2 Sitze: 1 vertikal, 2 horizontal

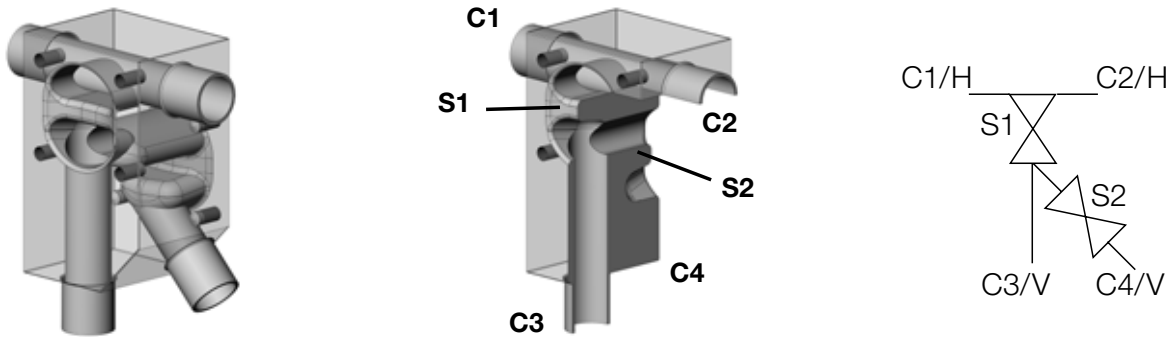
4C2S (4 Anschlüsse / 2 Sitze)

0203



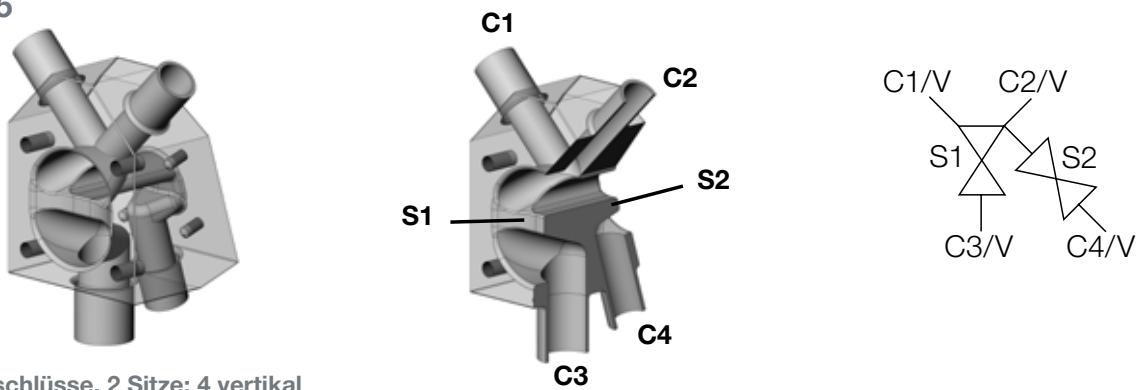
4 Anschlüsse, 2 Sitze: 2 vertikal, 2 horizontal

0204



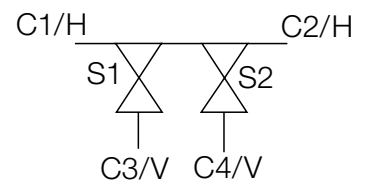
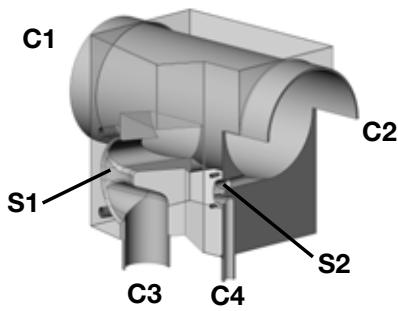
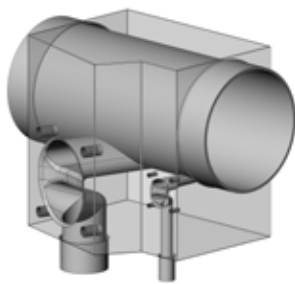
4 Anschlüsse, 2 Sitze: 2 vertikal, 2 horizontal

0205



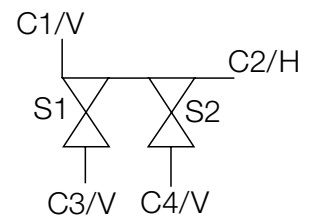
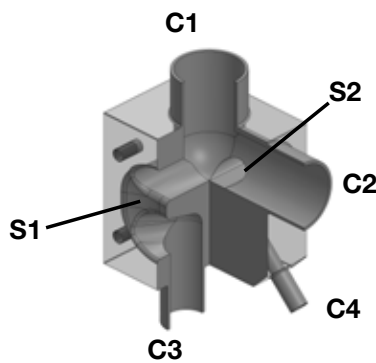
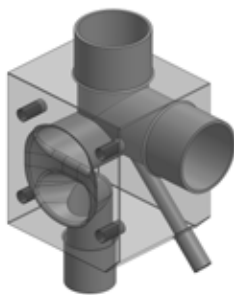
4 Anschlüsse, 2 Sitze: 4 vertikal

0235



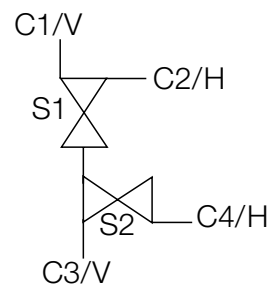
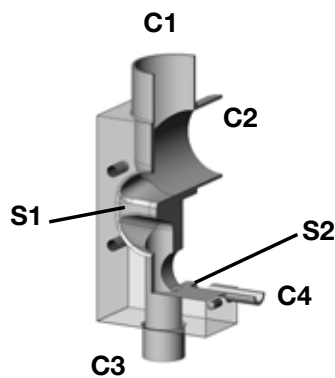
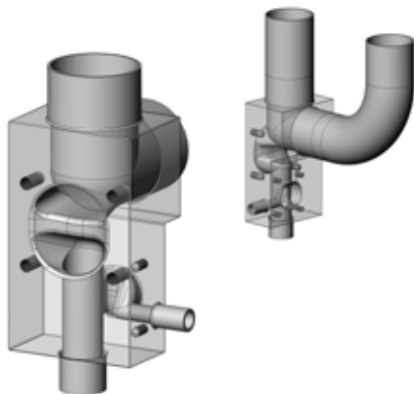
4 Anschlüsse, 2 Sitze: 2 vertikal, 2 horizontal

0249



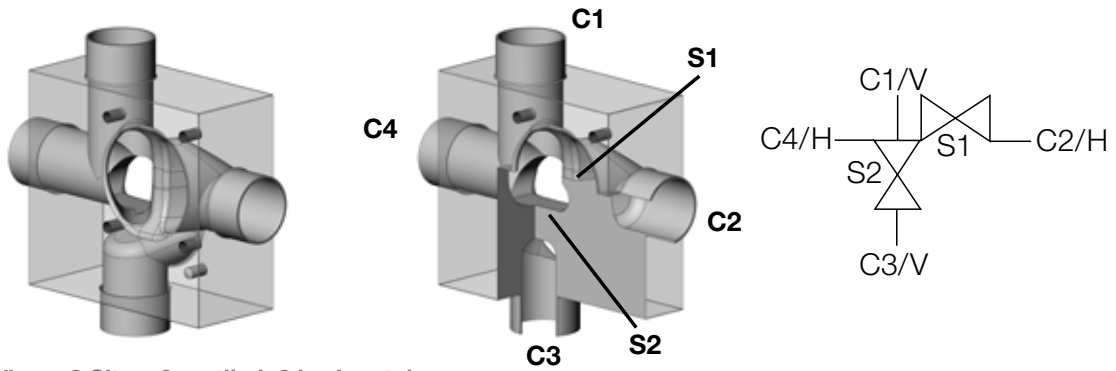
4 Anschlüsse, 2 Sitze: 3 vertikal, 1 horizontal

0250



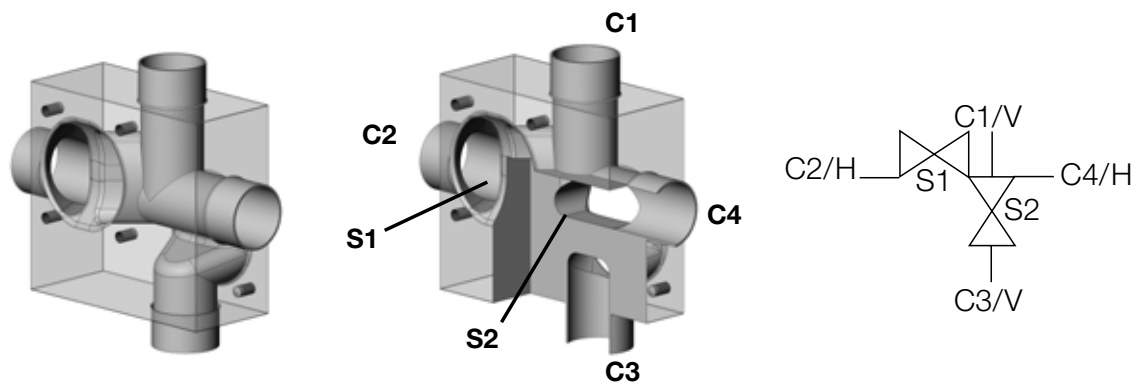
4 Anschlüsse, 2 Sitze: 2 vertikal, 2 horizontal

0253



4 Anschlüsse, 2 Sitze: 2 vertikal, 2 horizontal

0254

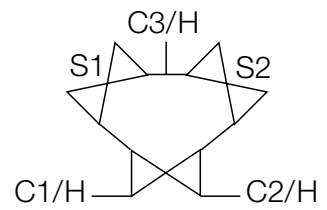
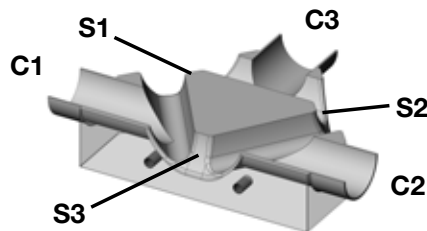
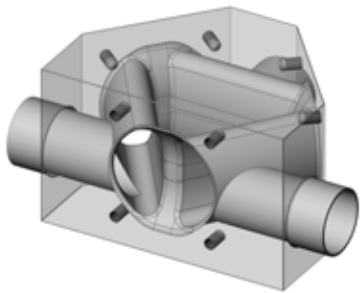


4 Anschlüsse, 2 Sitze: 2 vertikal, 2 horizontal

Blocklösung mit 3 Sitzen

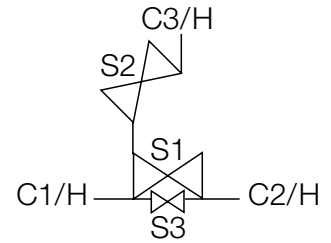
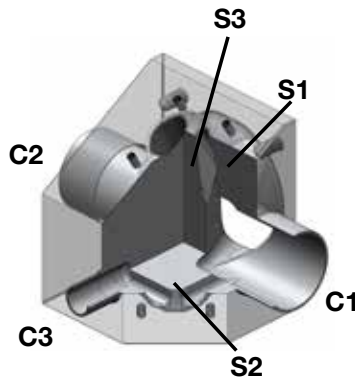
3C3S (3 Anschlüsse / 3 Sitze)

0316



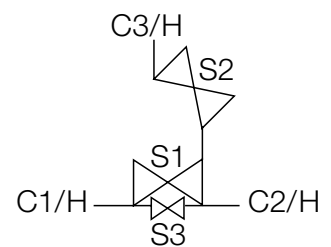
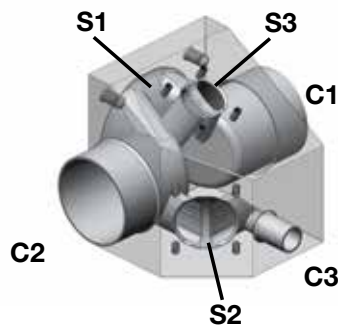
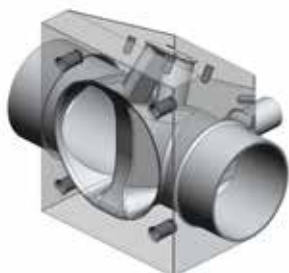
3 Anschlüsse, 3 Sitze: 3 horizontal

0325



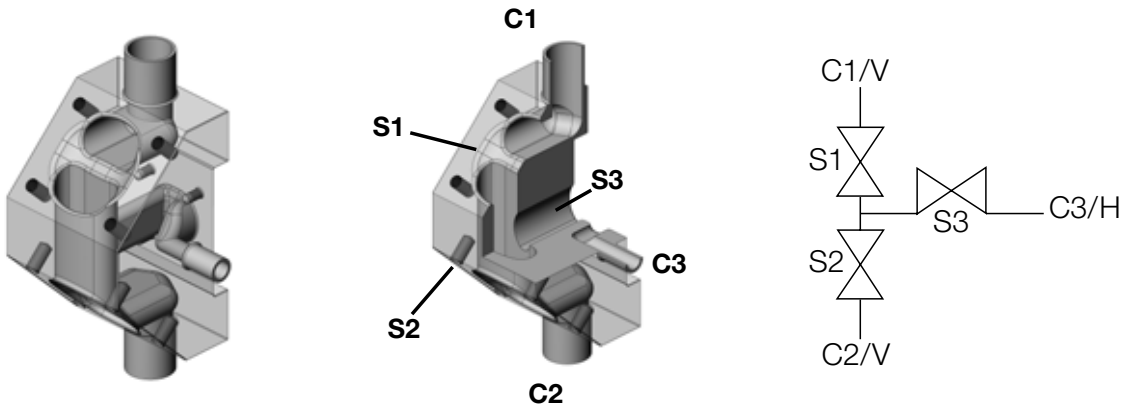
3 Anschlüsse, 3 Sitze: 3 horizontal

0328



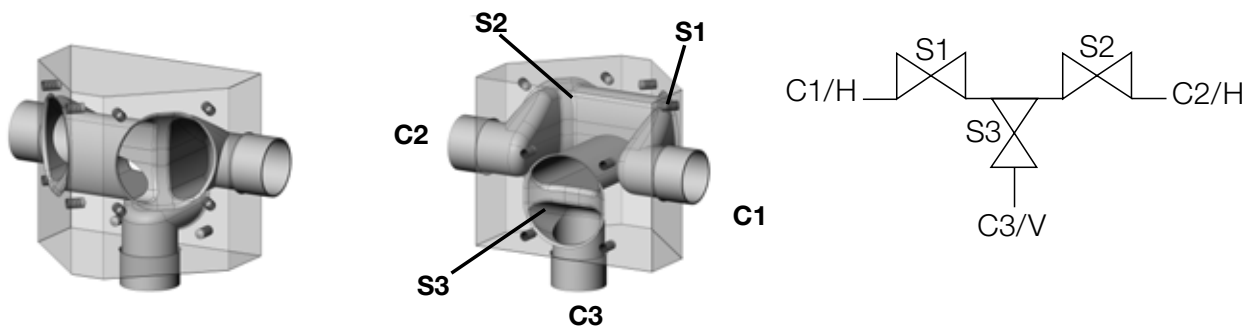
3 Anschlüsse, 3 Sitze: 3 horizontal

0333



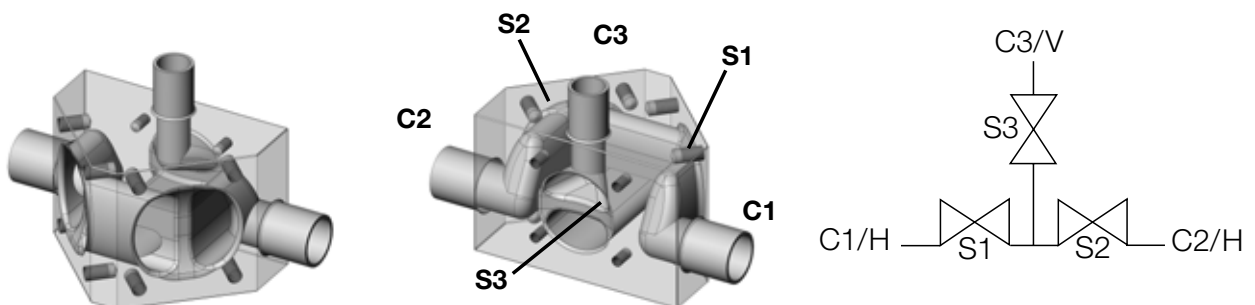
3 Anschlüsse, 3 Sitze: 2 vertikal, 1 horizontal

0334



3 Anschlüsse, 3 Sitze: 1 vertikal, 2 horizontal

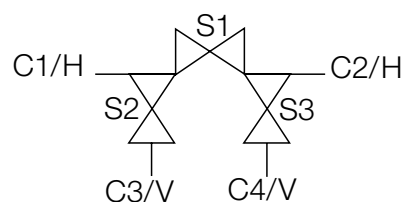
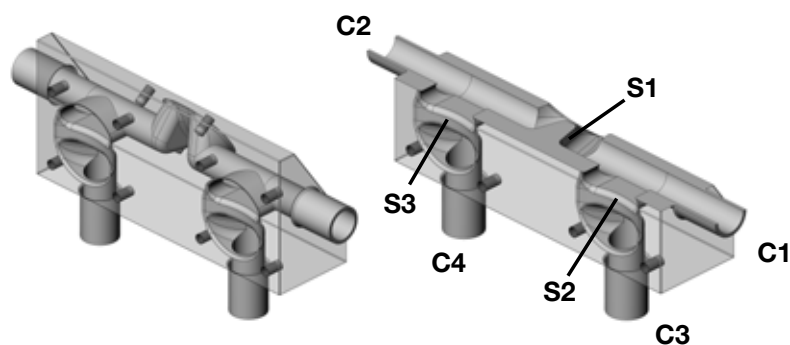
0339



3 Anschlüsse, 3 Sitze: 1 vertikal, 2 horizontal

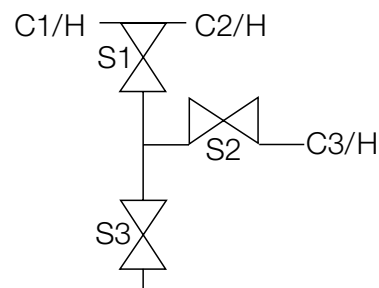
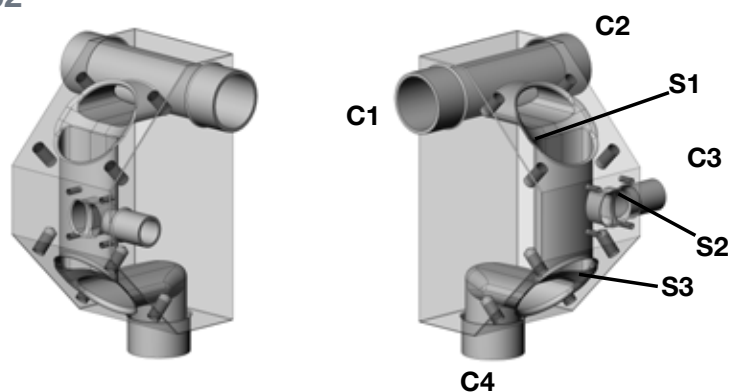
4C3S (4 Anschlüsse / 3 Sitze)

0301



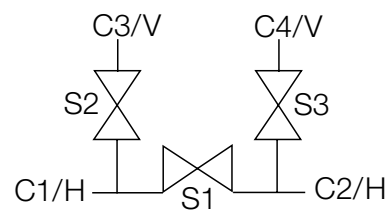
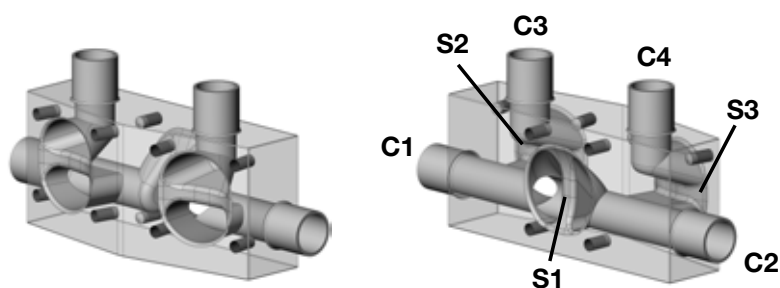
4 Anschlüsse, 3 Sitze: 2 vertikal, 2 horizontal

0302



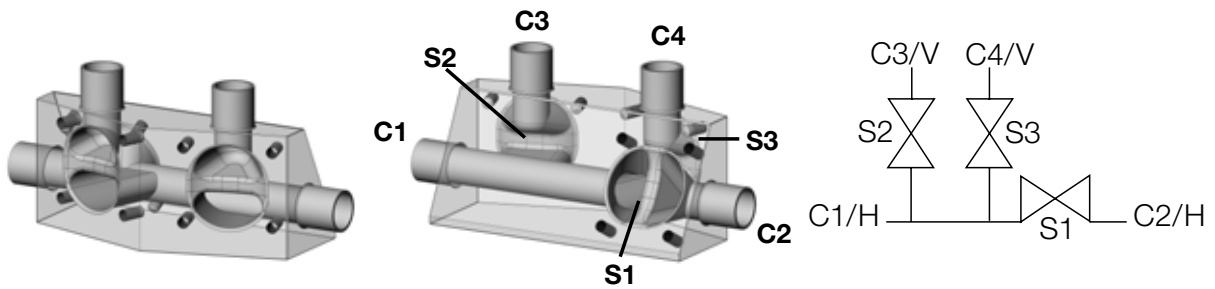
4 Anschlüsse, 3 Sitze: 1 vertikal, 3 horizontal

0303



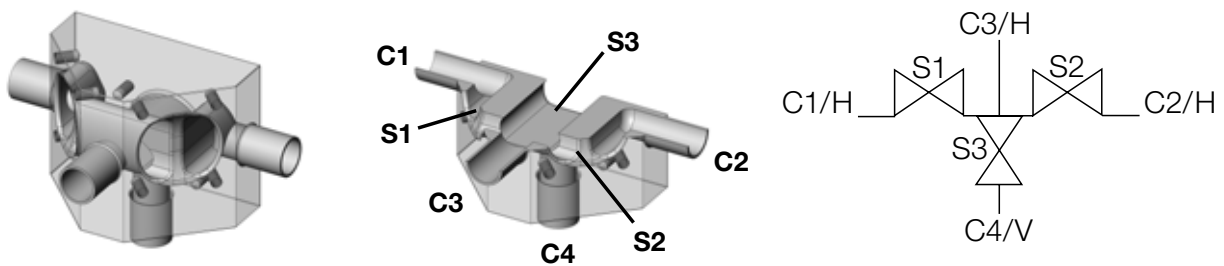
4 Anschlüsse, 3 Sitze: 2 vertikal, 2 horizontal

0304



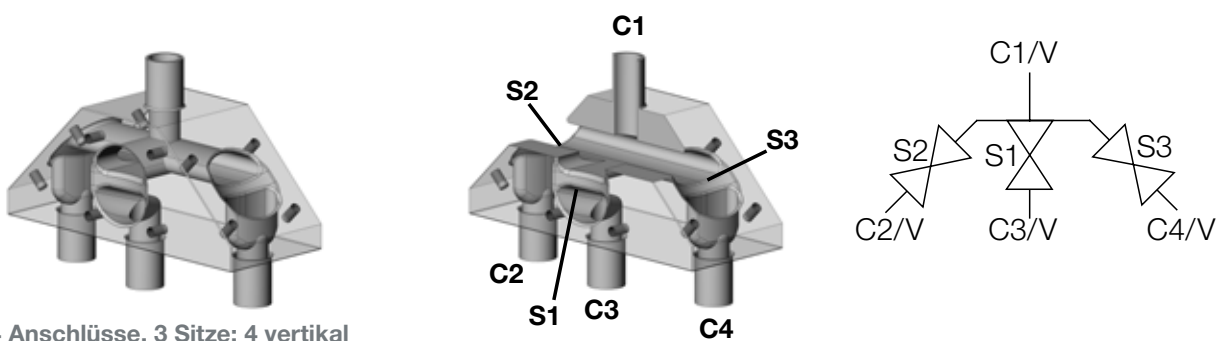
4 Anschlüsse, 3 Sitze: 2 vertikal, 2 horizontal

0317



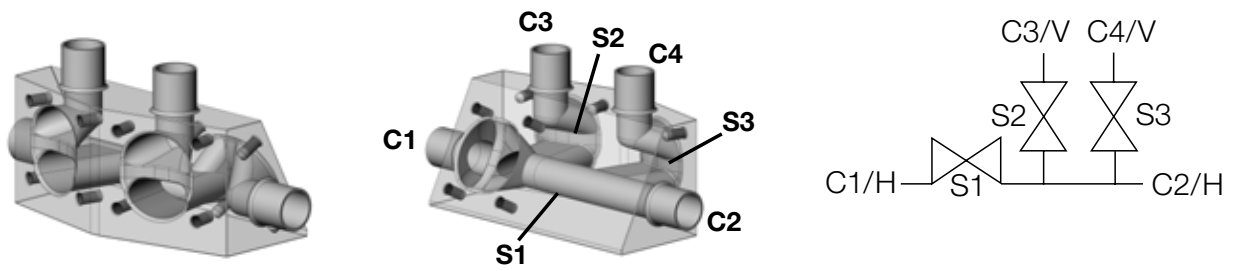
4 Anschlüsse, 3 Sitze: 1 vertikal, 3 horizontal

0319



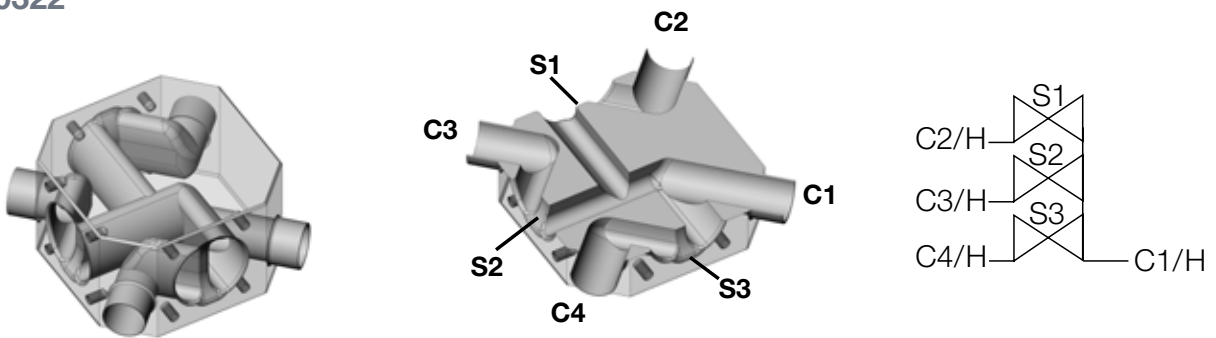
4 Anschlüsse, 3 Sitze: 4 vertikal

0321



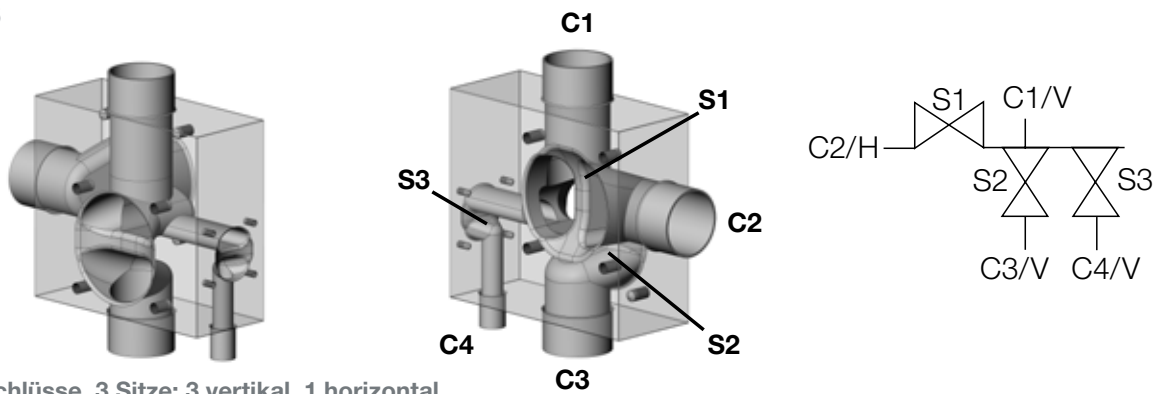
4 Anschlüsse, 3 Sitze: 2 vertikal, 2 horizontal

0322



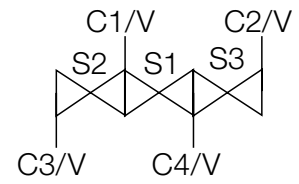
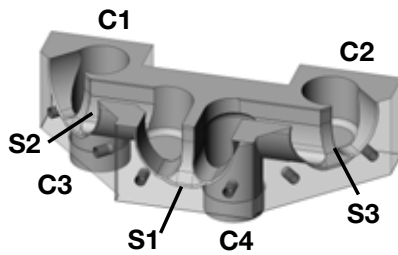
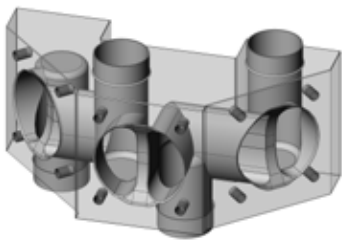
4 Anschlüsse, 3 Sitze: 4 horizontal

0326



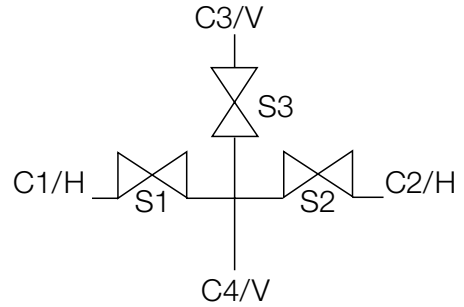
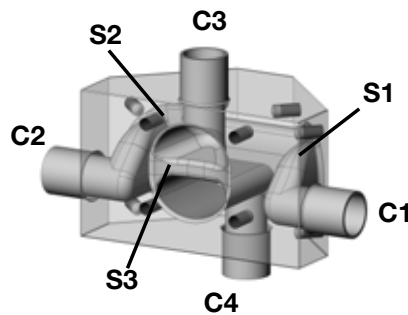
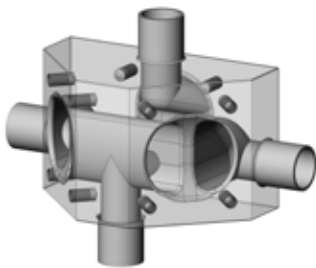
4 Anschlüsse, 3 Sitze: 3 vertikal, 1 horizontal

0329



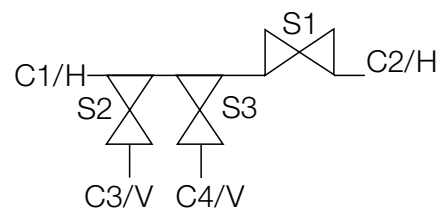
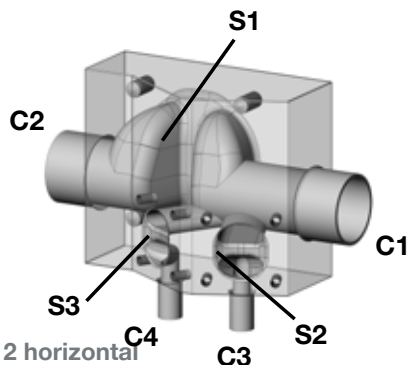
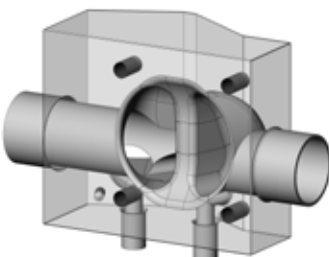
4 Anschlüsse, 3 Sitze: 4 vertikal

0335



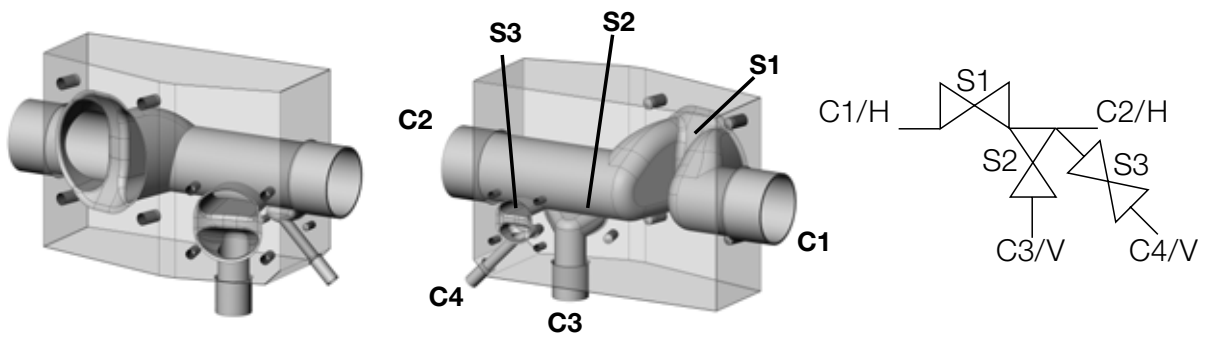
4 Anschlüsse, 3 Sitze: 2 vertikal, 2 horizontal

0336



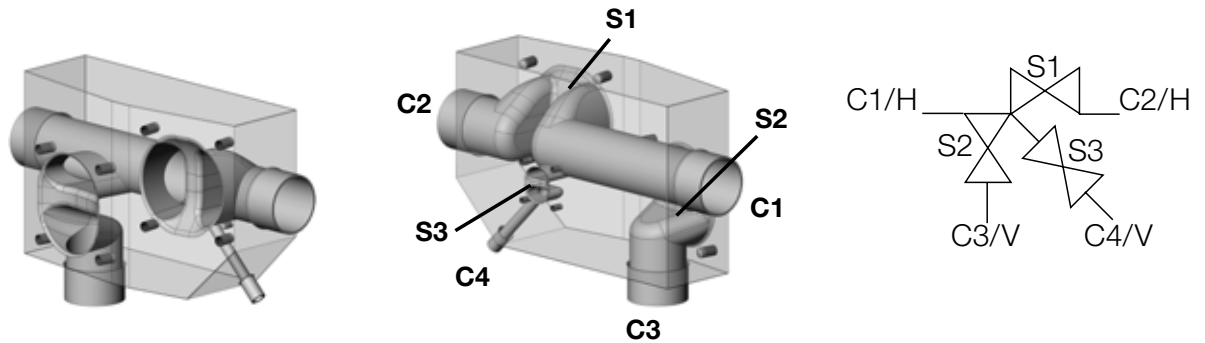
4 Anschlüsse, 3 Sitze: 2 vertikal, 2 horizontal

0337



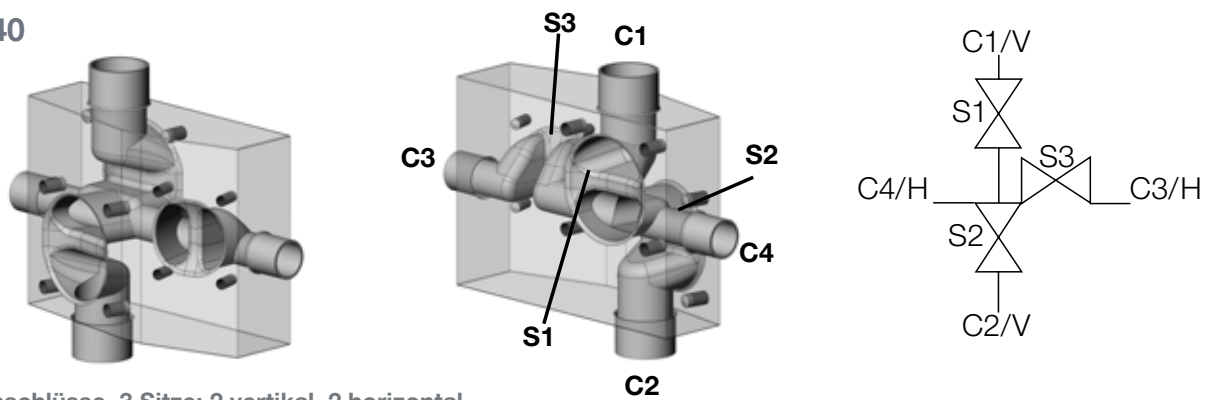
4 Anschlüsse, 3 Sitze: 2 vertikal, 2 horizontal

0338



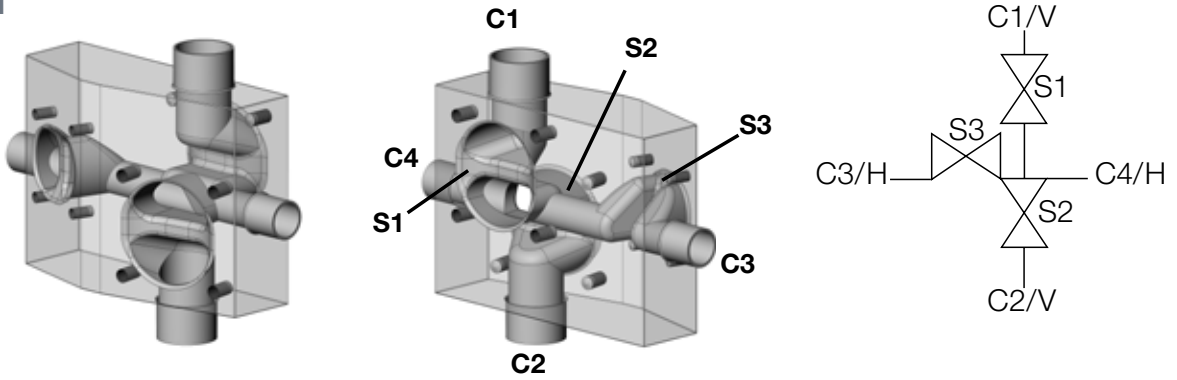
4 Anschlüsse, 3 Sitze: 2 vertikal, 2 horizontal

0340



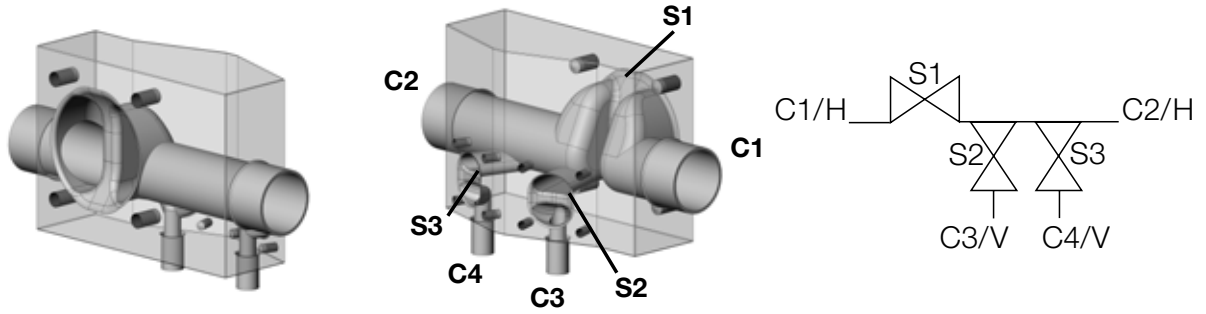
4 Anschlüsse, 3 Sitze: 2 vertikal, 2 horizontal

0341



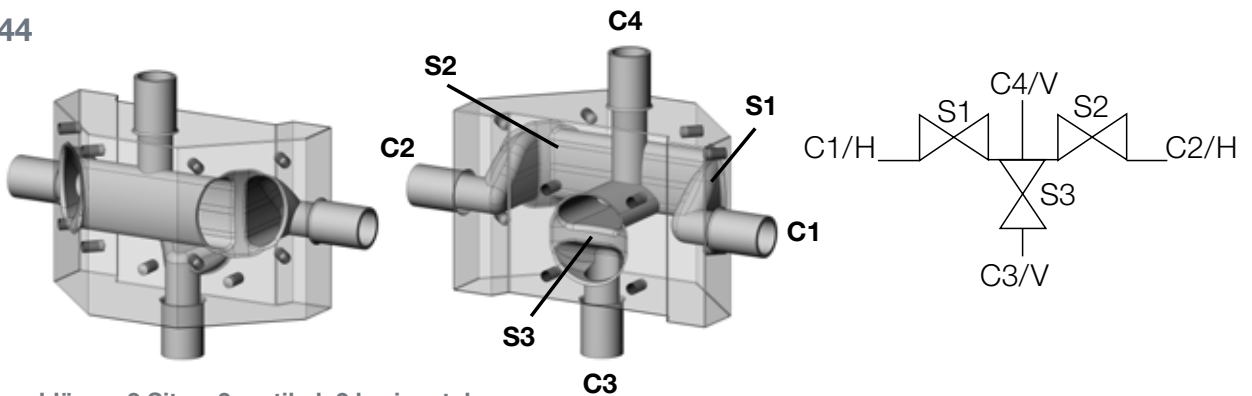
4 Anschlüsse, 3 Sitze: 2 vertikal, 2 horizontal

0343



4 Anschlüsse, 3 Sitze: 2 vertikal, 2 horizontal

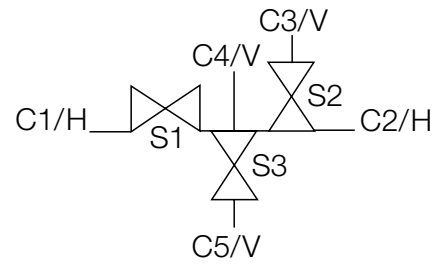
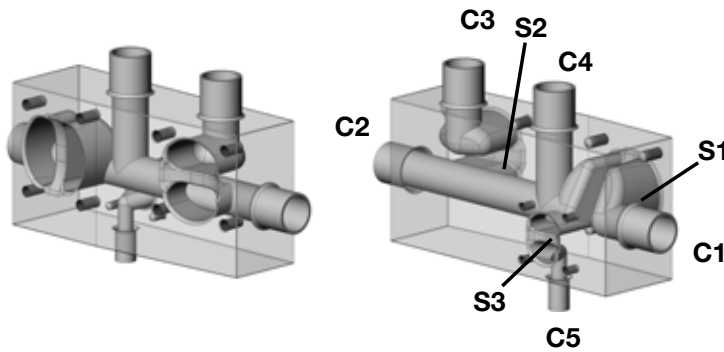
0344



4 Anschlüsse, 3 Sitze: 2 vertikal, 2 horizontal

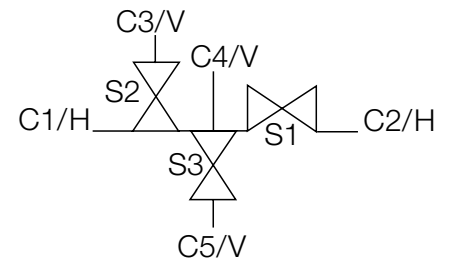
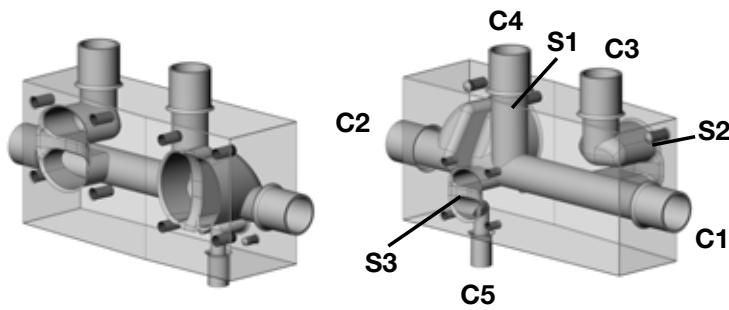
5C3S (5 Anschlüsse / 3 Sitze)

0323



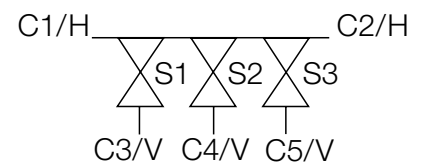
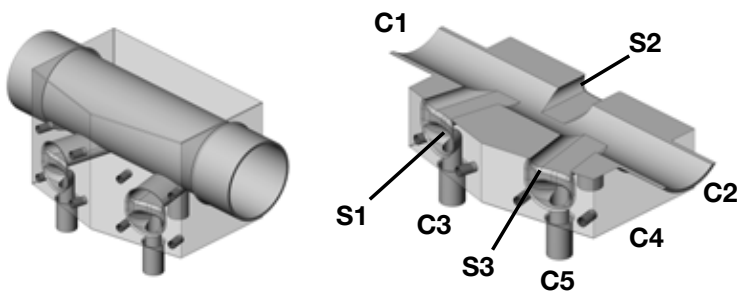
5 Anschlüsse, 3 Sitze: 3 vertikal, 2 horizontal

0327



5 Anschlüsse, 3 Sitze: 3 vertikal, 2 horizontal

0342

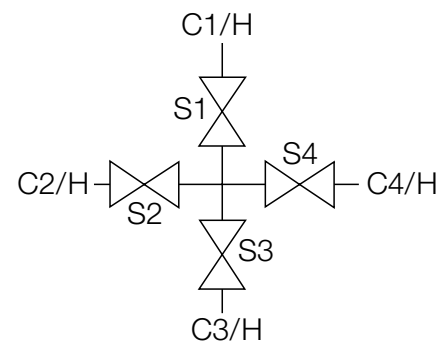
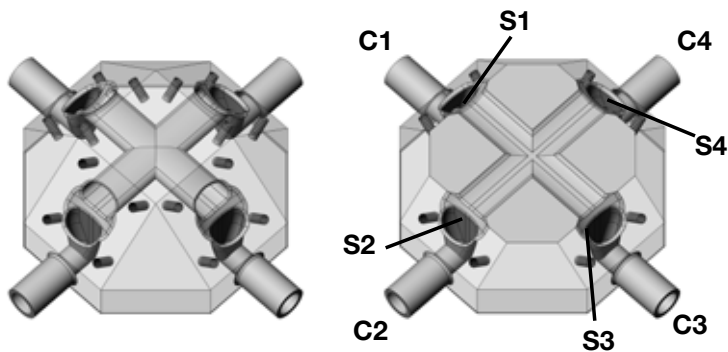


5 Anschlüsse, 3 Sitze: 3 vertikal, 2 horizontal

Blocklösung mit 4 Sitzen

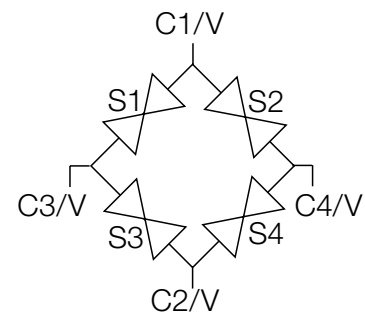
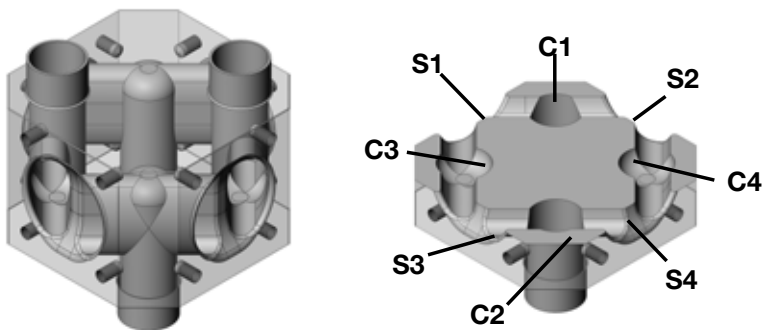
4C4S (4 Anschlüsse / 4 Sitze)

0413



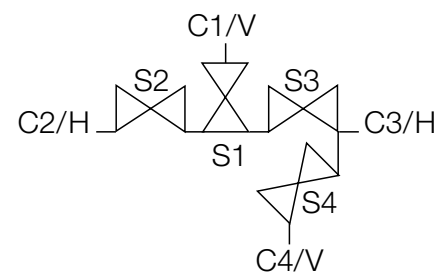
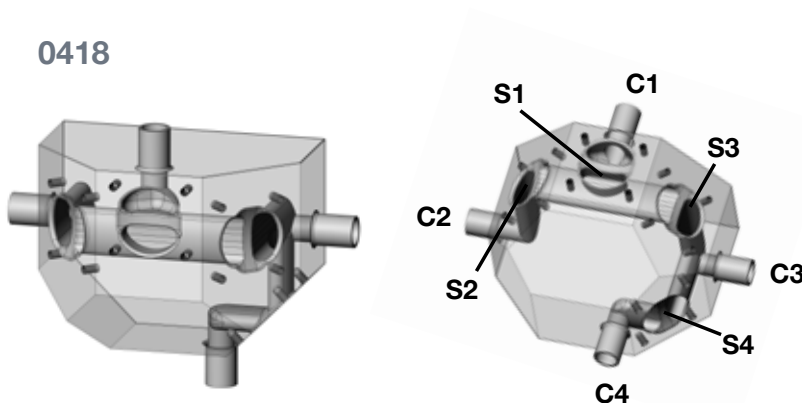
4 Anschlüsse, 4 Sitze: 4 horizontal

0415



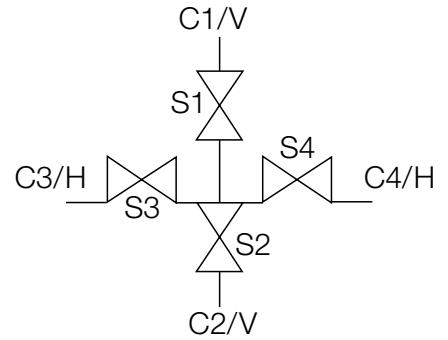
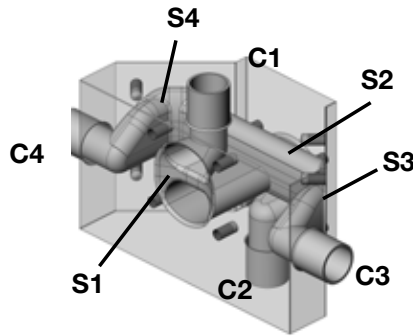
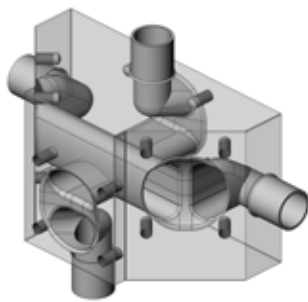
4 Anschlüsse, 4 Sitze: 4 vertikal

0418



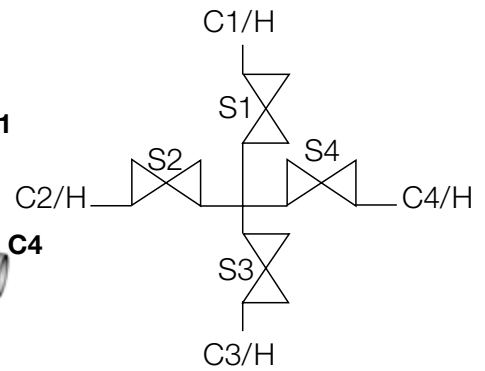
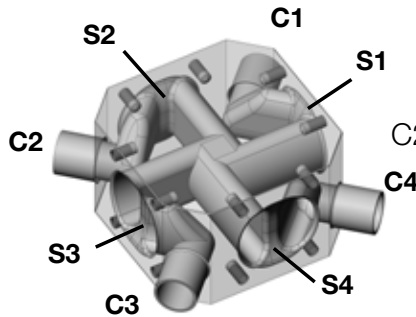
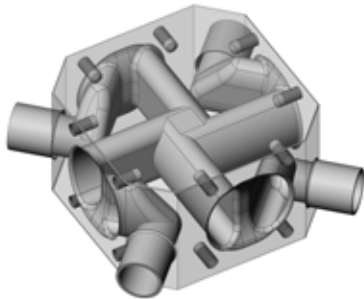
4 Anschlüsse, 4 Sitze: 2 vertikal, 2 horizontal

0423



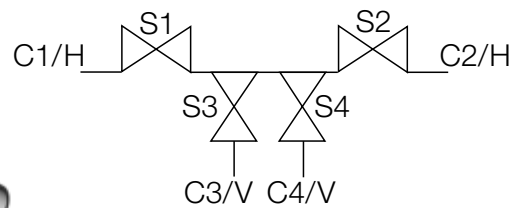
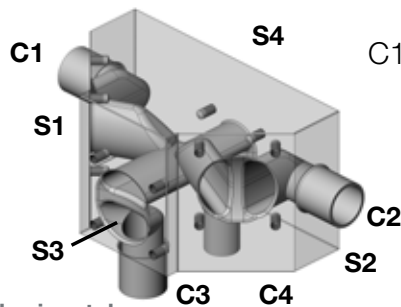
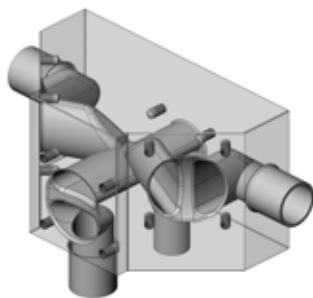
4 Anschlüsse, 4 Sitze: 2 vertikal, 2 horizontal

0410



4 Anschlüsse, 4 Sitze: 4 horizontal

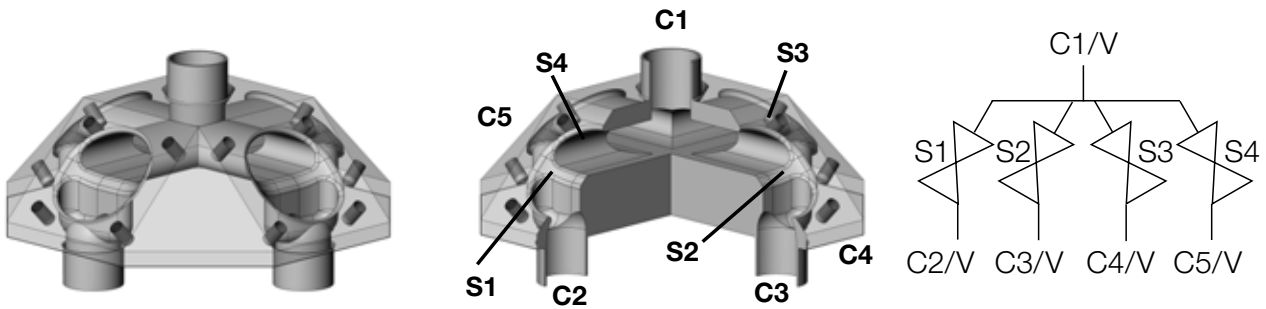
0409



4 Anschlüsse, 4 Sitze: 2 vertikal, 2 horizontal

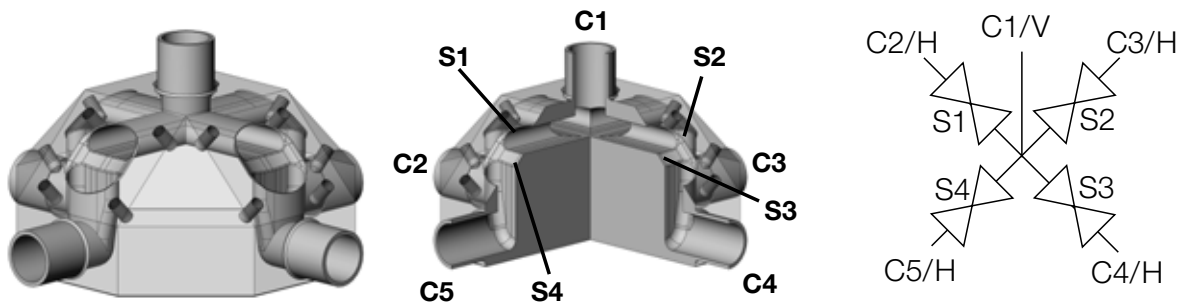
5C4S (5 Anschlüsse / 4 Sitze)

0403



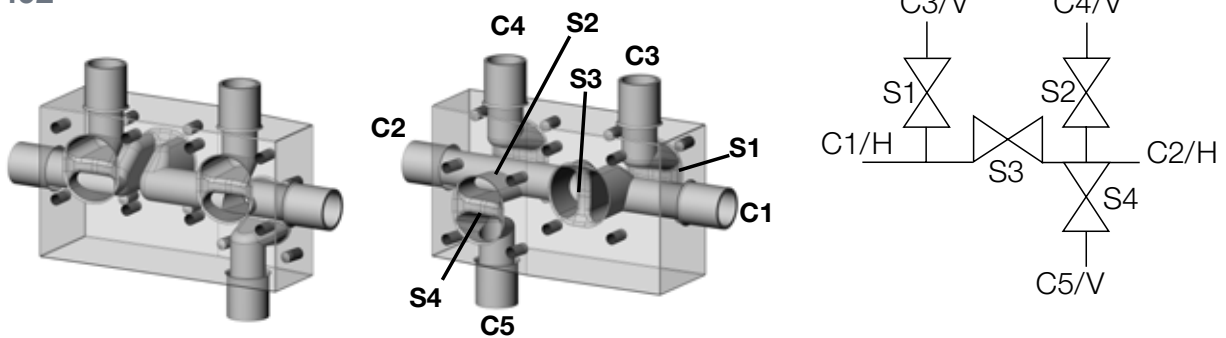
5 Anschlüsse, 4 Sitze: 5 vertikal

0416



5 Anschlüsse, 4 Sitze: 1 vertikal, 4 horizontal

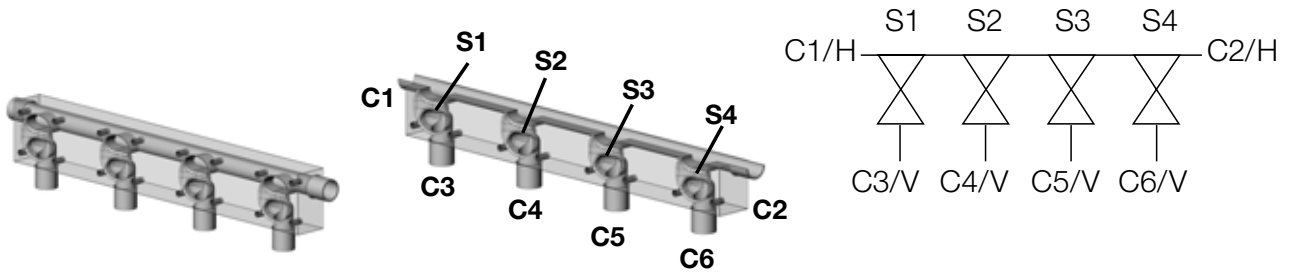
0492



5 Anschlüsse, 4 Sitze: 3 vertikal, 2 horizontal

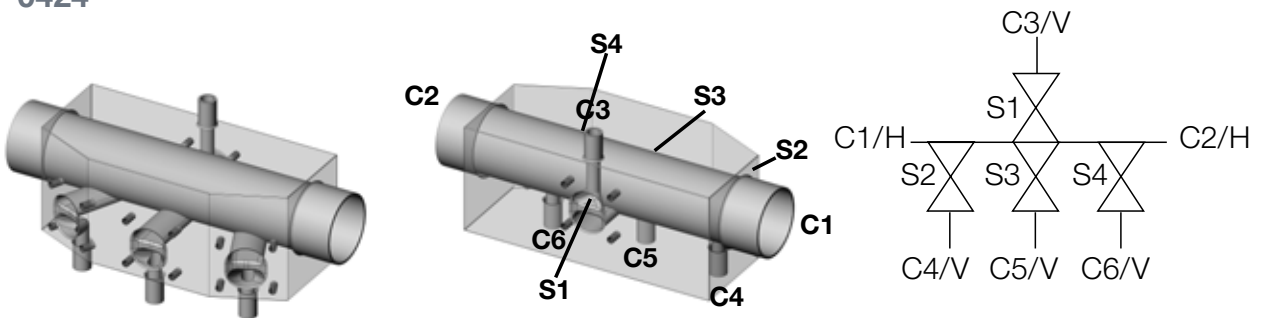
6C4S (6 Anschlüsse / 4 Sitze)

0417



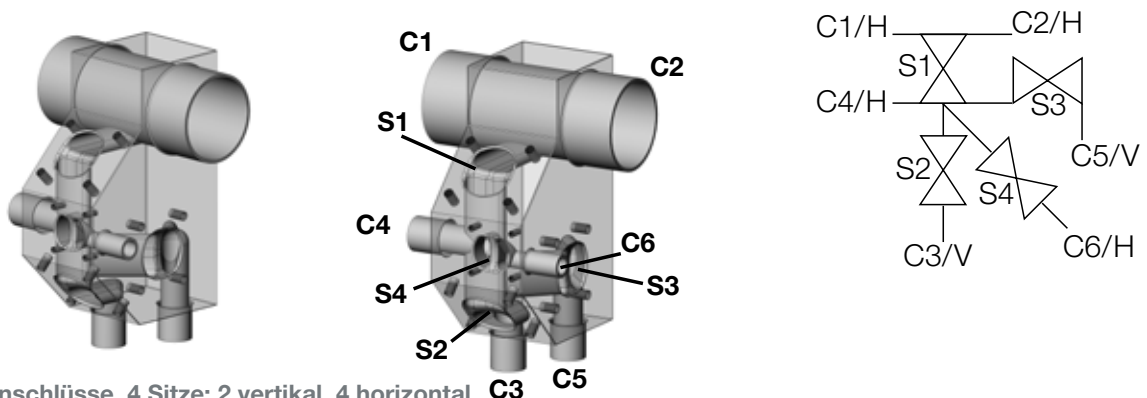
6 Anschlüsse, 4 Sitze: 4 vertikal, 2 horizontal

0424



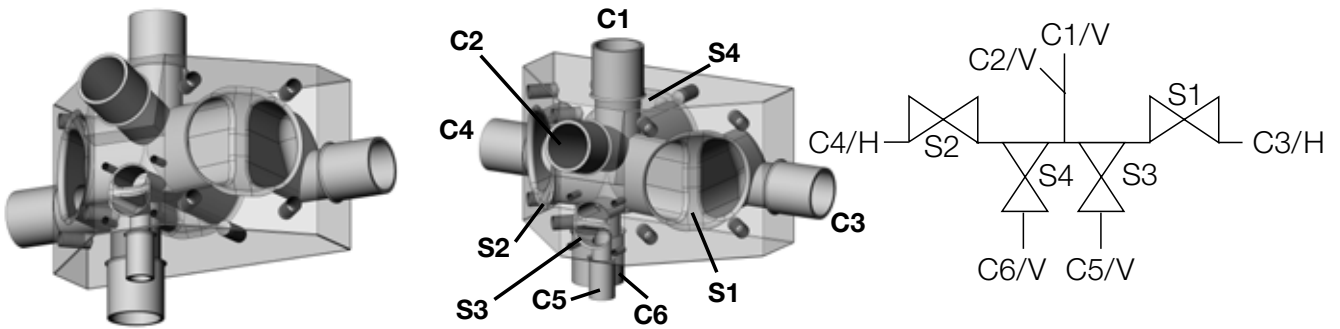
6 Anschlüsse, 4 Sitze: 4 vertikal, 2 horizontal

0425



6 Anschlüsse, 4 Sitze: 2 vertikal, 4 horizontal

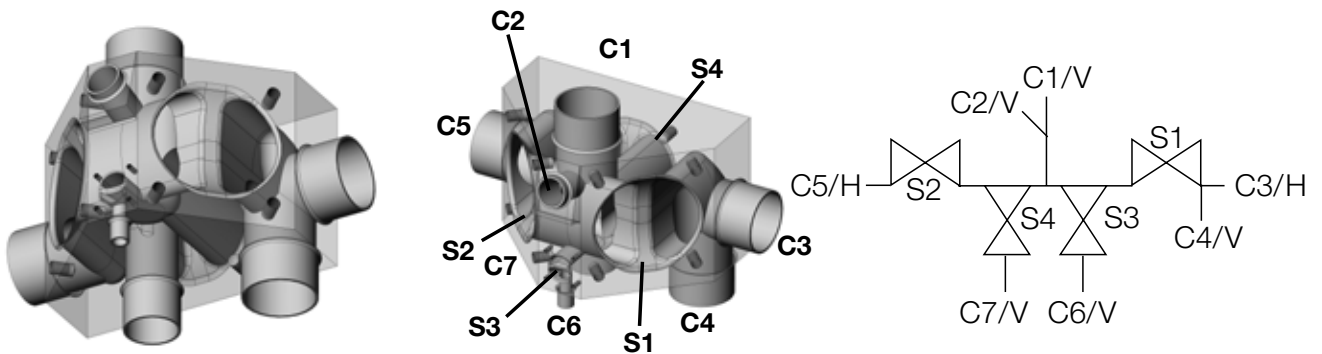
0476



6 Anschlüsse, 4 Sitze: 4 vertikal, 2 horizontal

7C4S (7 Anschlüsse / 4 Sitze)

0477

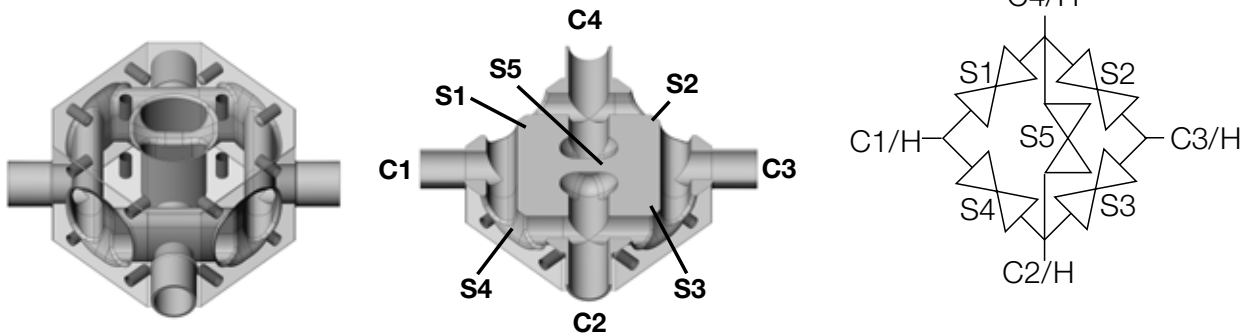


7 Anschlüsse, 4 Sitze: 5 vertikal, 2 horizontal

Blocklösung mit 5 Sitzen

4C5S (4 Anschlüsse / 5 Sitze)

0501

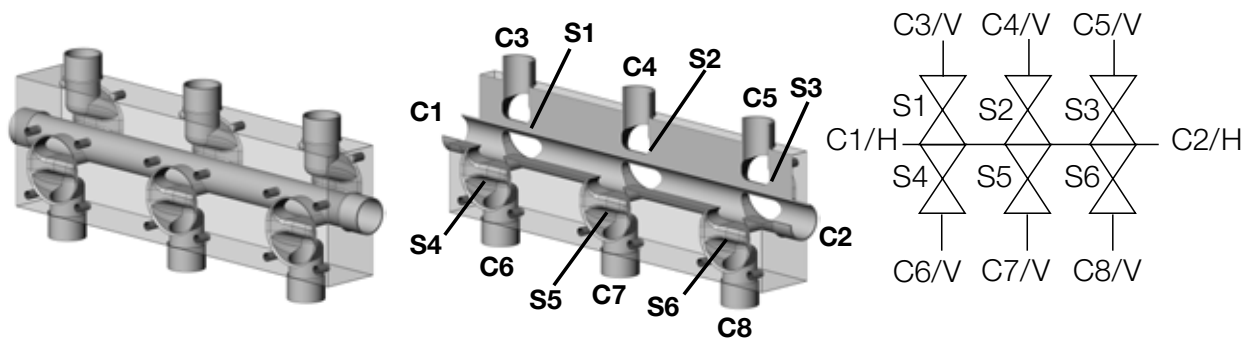


4 Anschlüsse, 5 Sitze: 4 horizontal

Blocklösung mit 6 Sitzen

8C6S (8 Anschlüsse / 6 Sitze)

0602

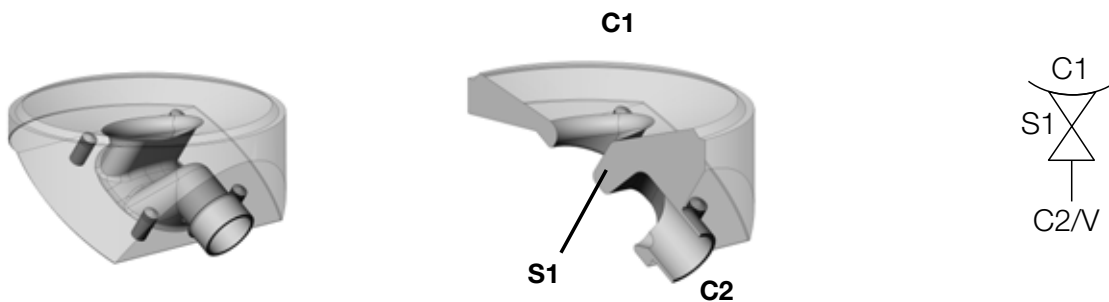


8 Anschlüsse, 6 Sitze: 6 vertikal, 2 horizontal

Blocklösung für Tanks

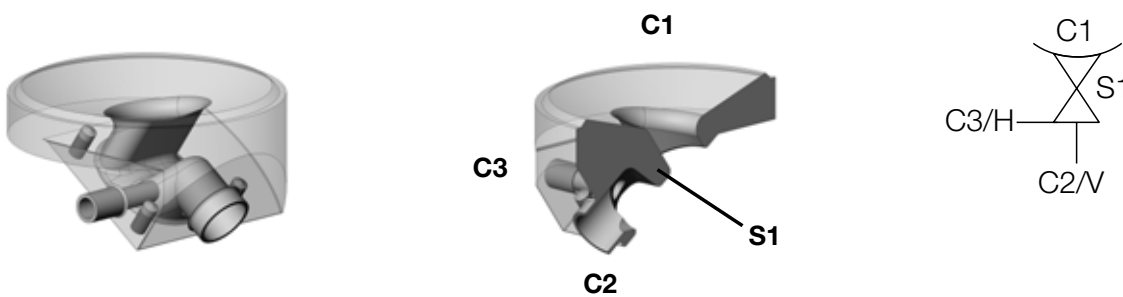
Bodenablassventil

T-Ventil Standard



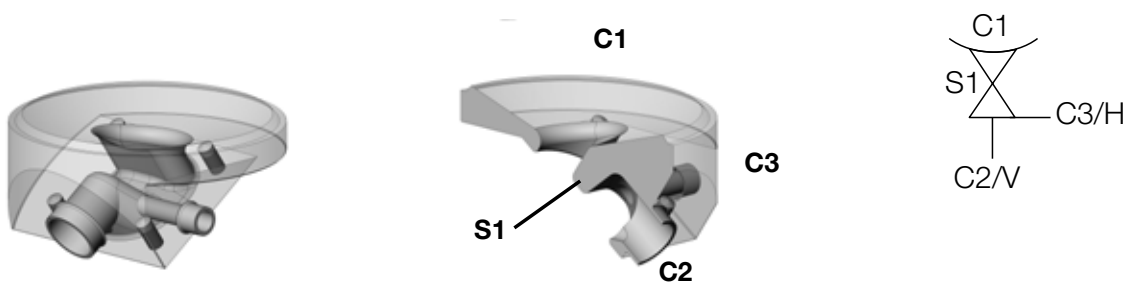
2 Anschlüsse, 1 Sitz: 2 vertikal

NBxx links



3 Anschlüsse, 1 Sitz: 2 vertikal, 1 horizontal

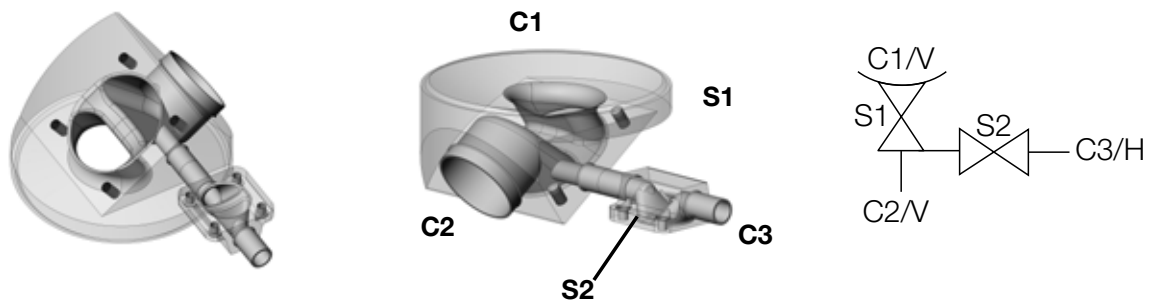
NBxx rechts



3 Anschlüsse, 1 Sitz: 2 vertikal, 1 horizontal

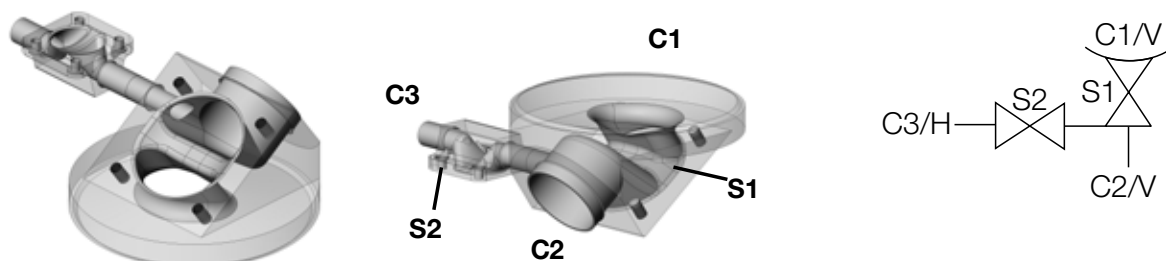
Bodenablassventil mit angeschweißtem Membranventil

0231



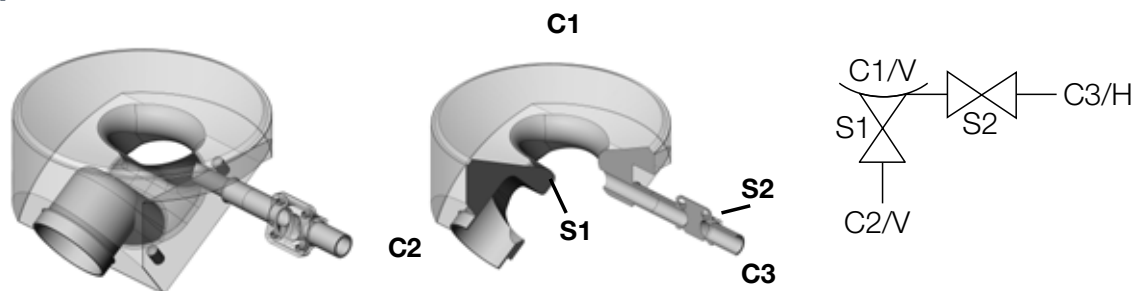
3 Anschlüsse, 2 Sitze: 2 vertikal, 1 horizontal

0243



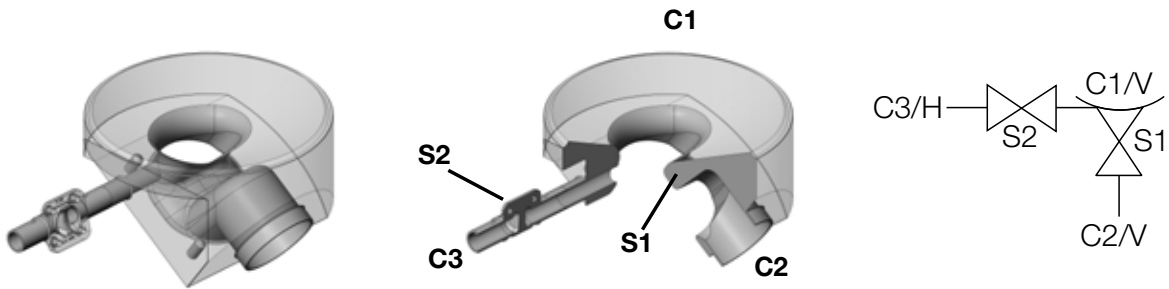
3 Anschlüsse, 2 Sitze: 2 vertikal, 1 horizontal

0247



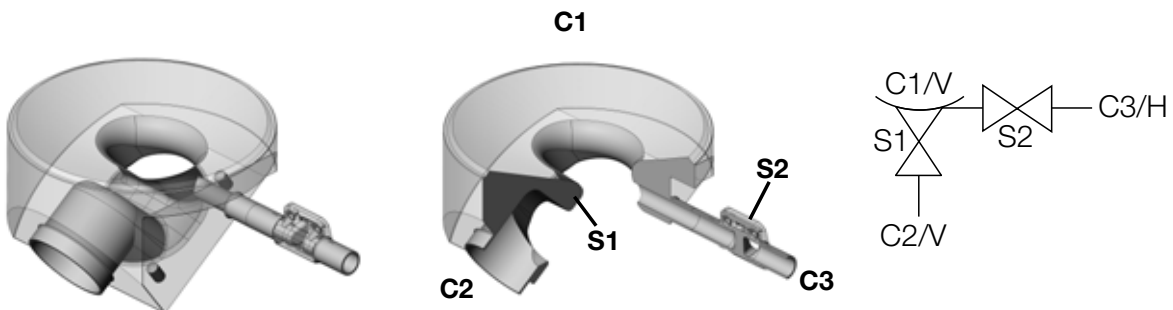
3 Anschlüsse, 2 Sitze: 2 vertikal, 1 horizontal

0244



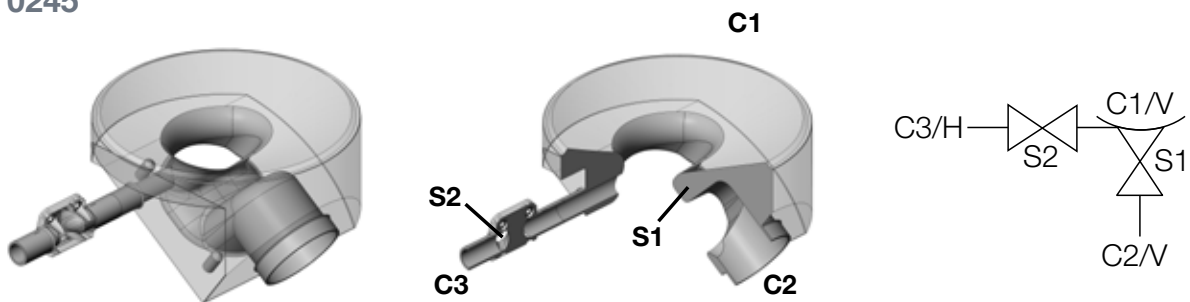
3 Anschlüsse, 2 Sitze: 2 vertikal, 1 horizontal

0248



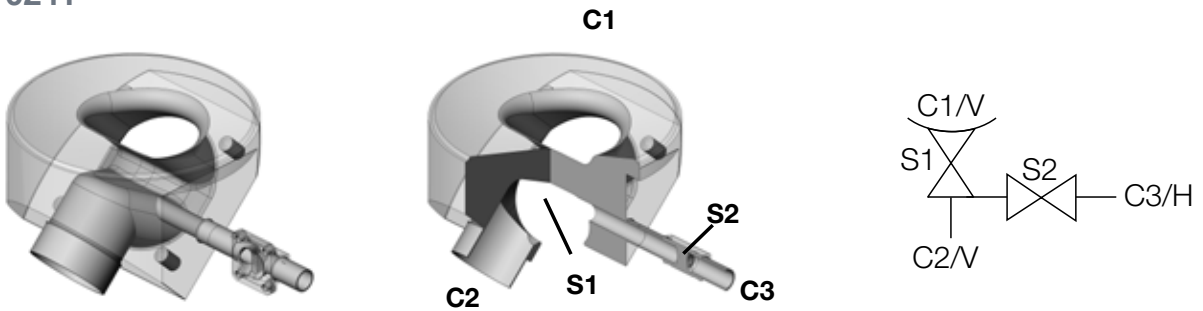
3 Anschlüsse, 2 Sitze: 2 vertikal, 1 horizontal

0245



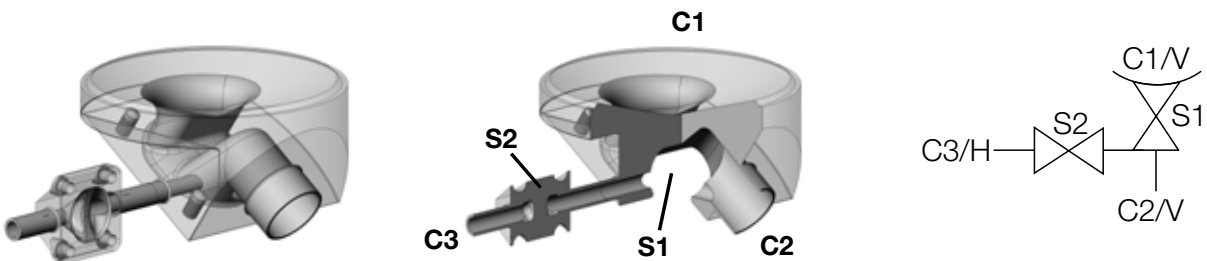
3 Anschlüsse, 2 Sitze: 2 vertikal, 1 horizontal

0241



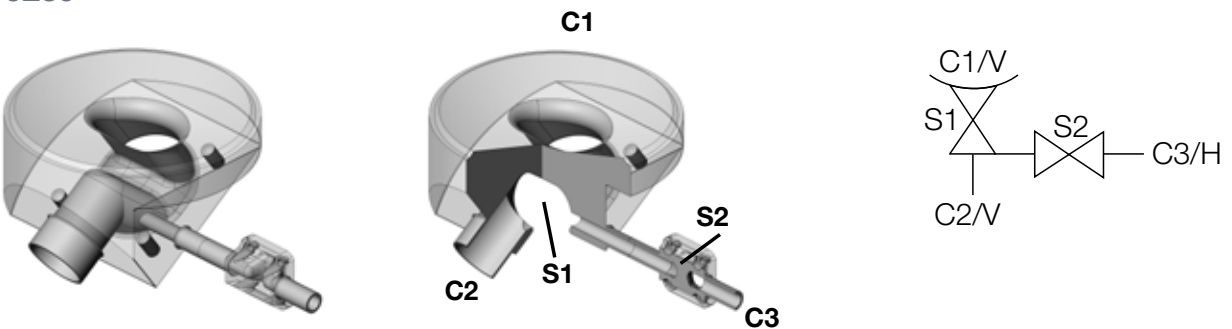
3 Anschlüsse, 2 Sitze: 2 vertikal, 1 horizontal

0242



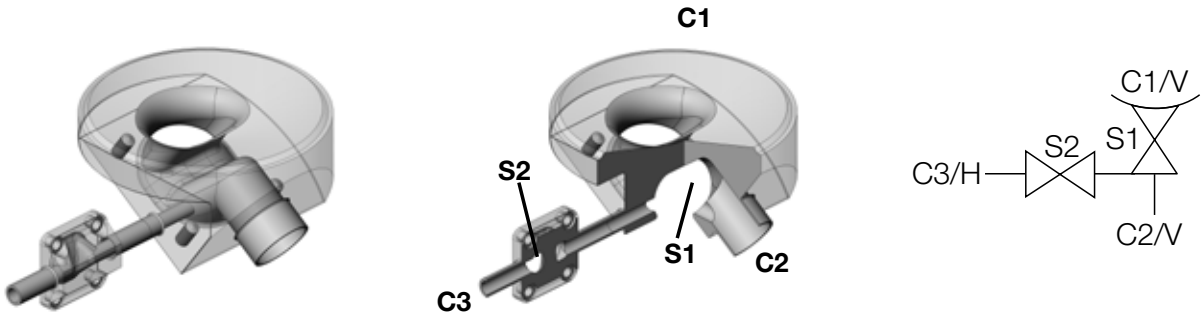
3 Anschlüsse, 2 Sitze: 2 vertikal, 1 horizontal

0239



3 Anschlüsse, 2 Sitze: 2 vertikal, 1 horizontal

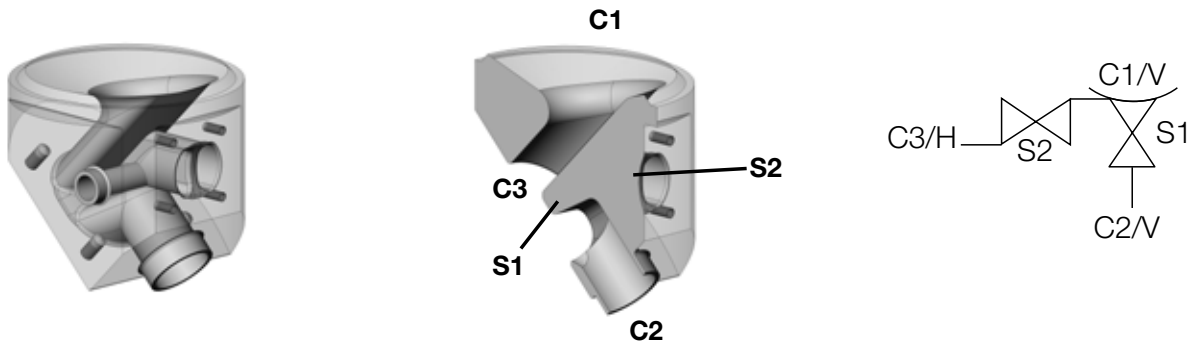
0240



3 Anschlüsse, 2 Sitze: 2 vertikal, 1 horizontal

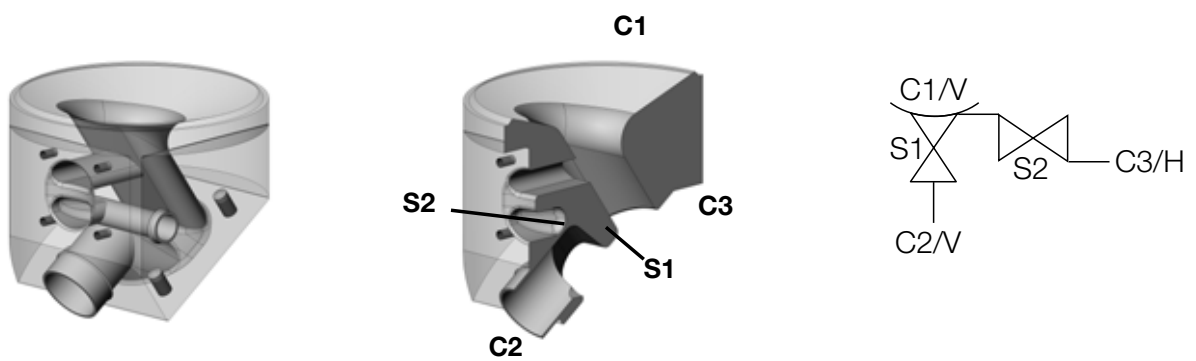
Bodenablassventil mit integriertem Membranventil

0252



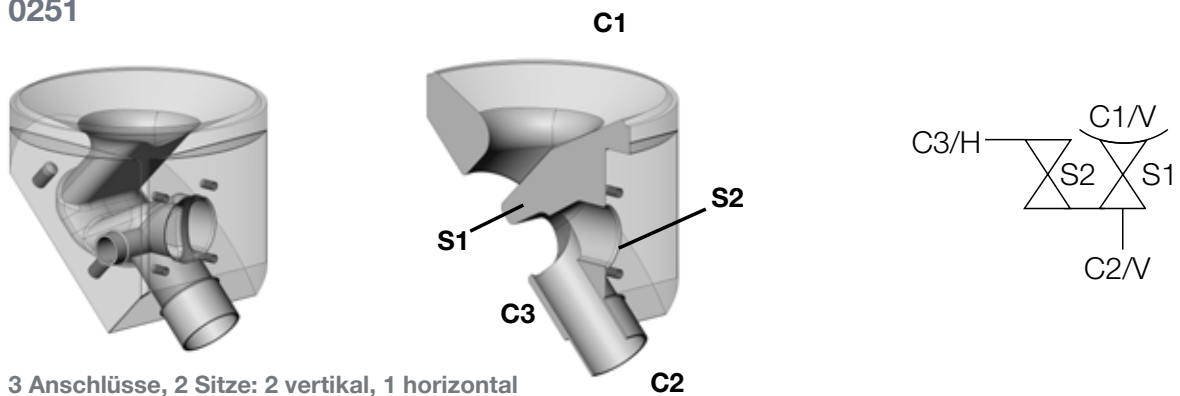
3 Anschlüsse, 2 Sitze: 2 vertikal, 1 horizontal

0229



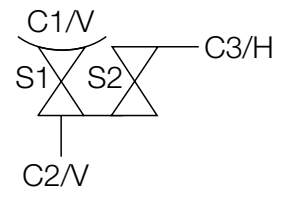
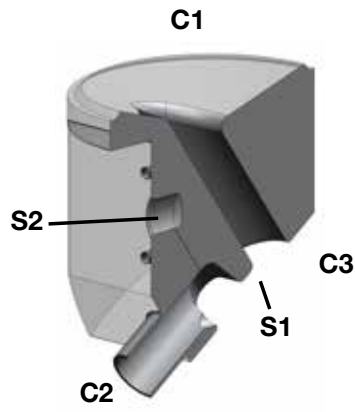
3 Anschlüsse, 2 Sitze: 2 vertikal, 1 horizontal

0251



3 Anschlüsse, 2 Sitze: 2 vertikal, 1 horizontal

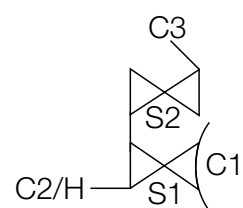
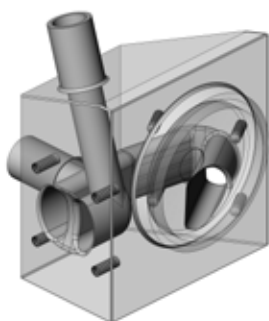
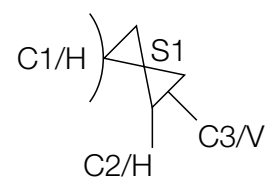
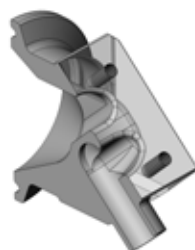
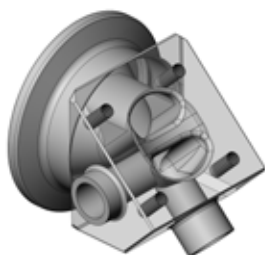
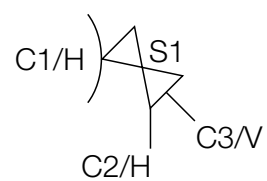
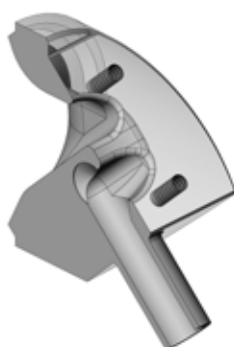
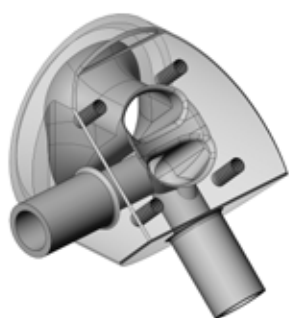
0206



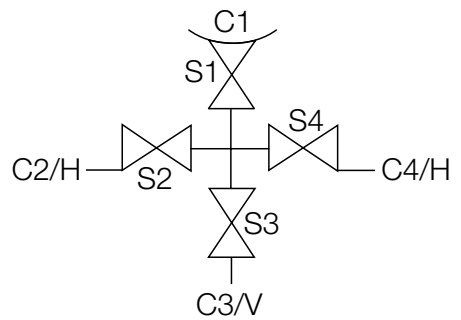
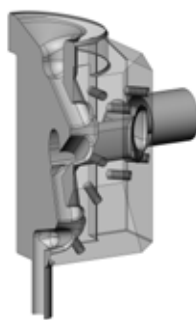
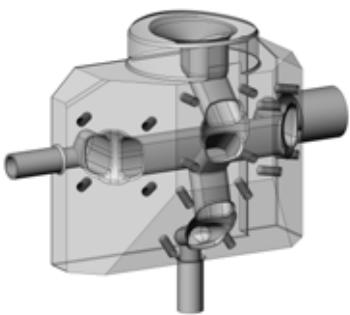
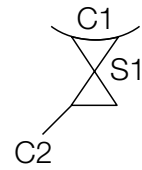
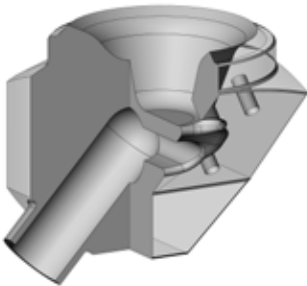
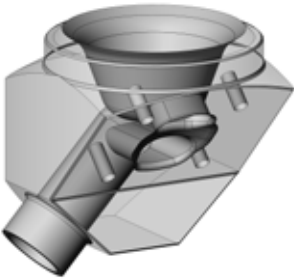
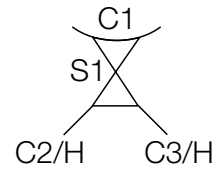
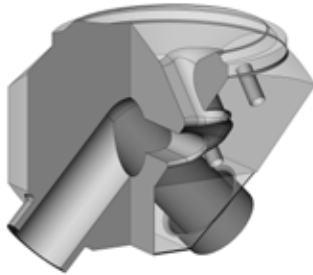
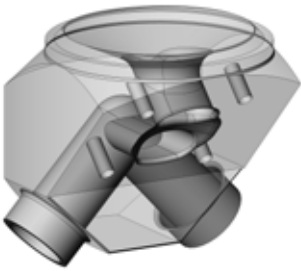
3 Anschlüsse, 2 Sitze: 2 vertikal, 1 horizontal

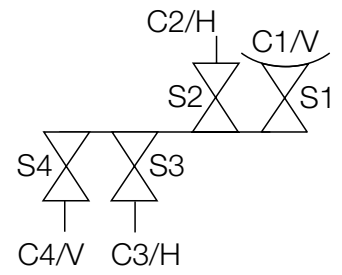
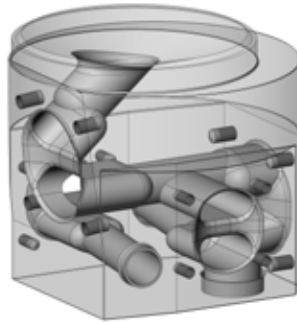
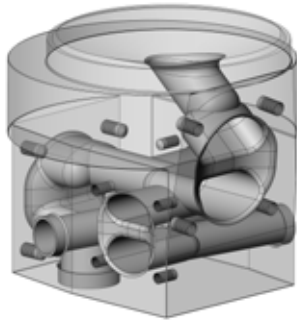
Beispiele kundenspezifischer Blocklösungen für Tanks

Tankwandlösungen

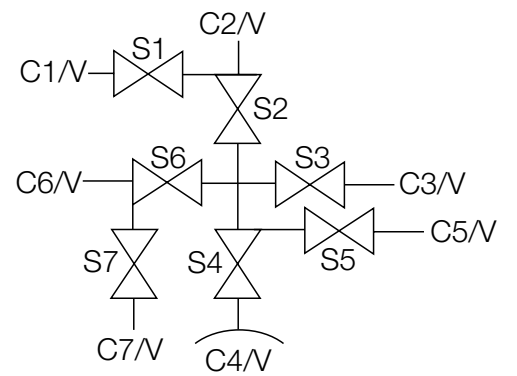
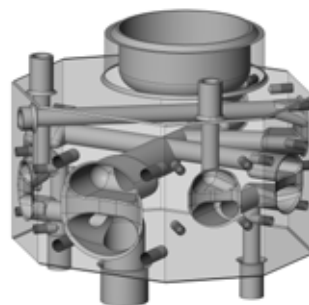
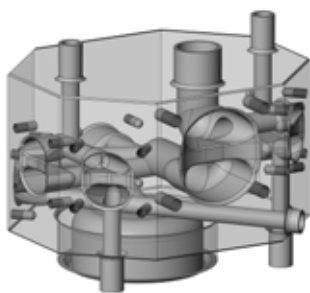


Tankbodenlösungen



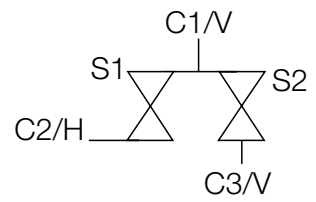


Tank-Deckel Lösung

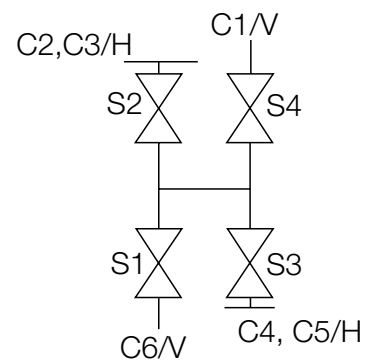
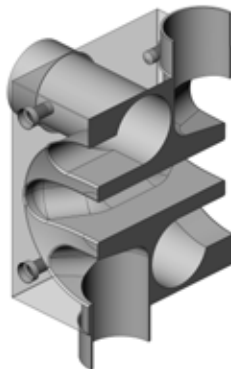
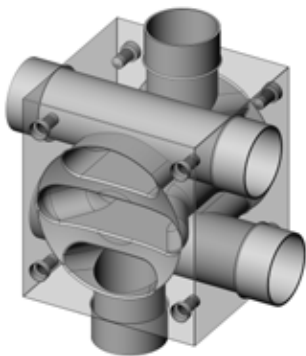


Spezifische Lösungen

Probenentnahmesystem



Mix-Proof-Ventil



Weitere Informationen

Blockventilarten und Datenblatt



Typ 2034



Antriebe



Typ 2103



Typ 2031



Typ 2063



Typ 3323



Typ 2036



Typ 3233



Zubehör für pneumatische Antriebe:



Typ 2XXX



Steuerköpfe für pneumatische Antriebe



Typ 8685



Typ 8686



Typ 8690



Typ 8691



Typ 8692



Typ 8693



Typ 8694



Typ 8695



Typ 8696



Typ 8697



Membranbroschüre



Bürkert Fluid Control Systems

Christian-Bürkert-Straße 13-17
74653 Ingelfingen
Deutschland

Tel.: +49 7940 10-0
Fax: +49 7940 10-91 204

info@burkert.com
www.burkert.com